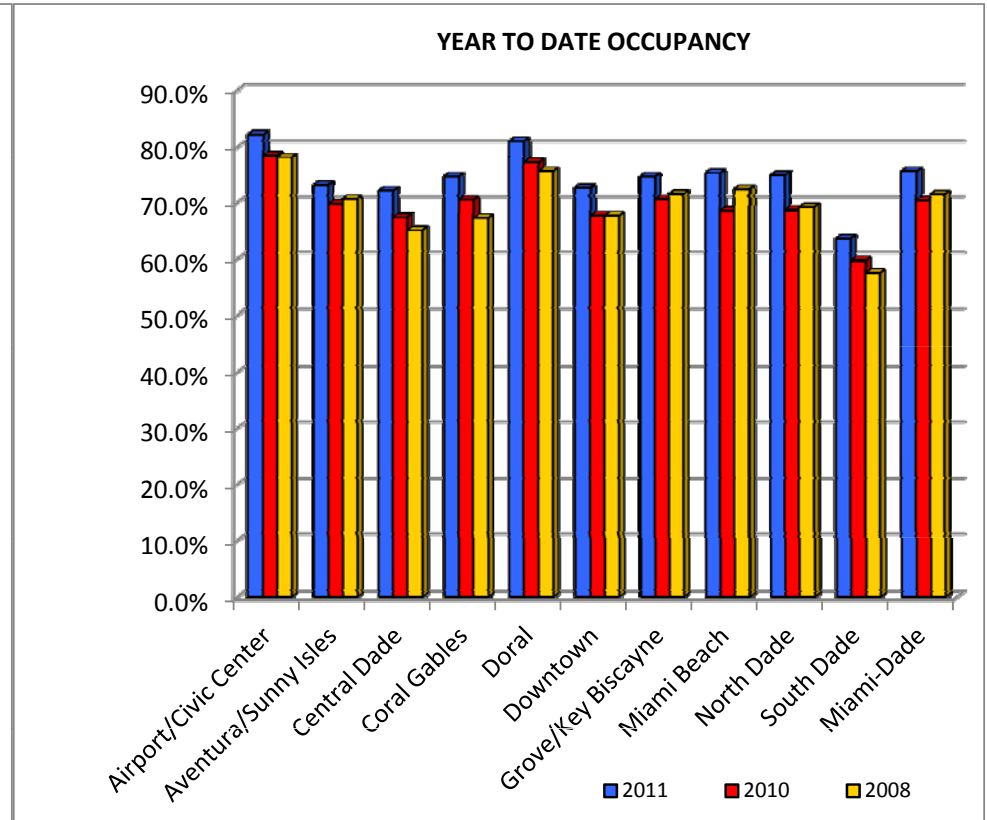
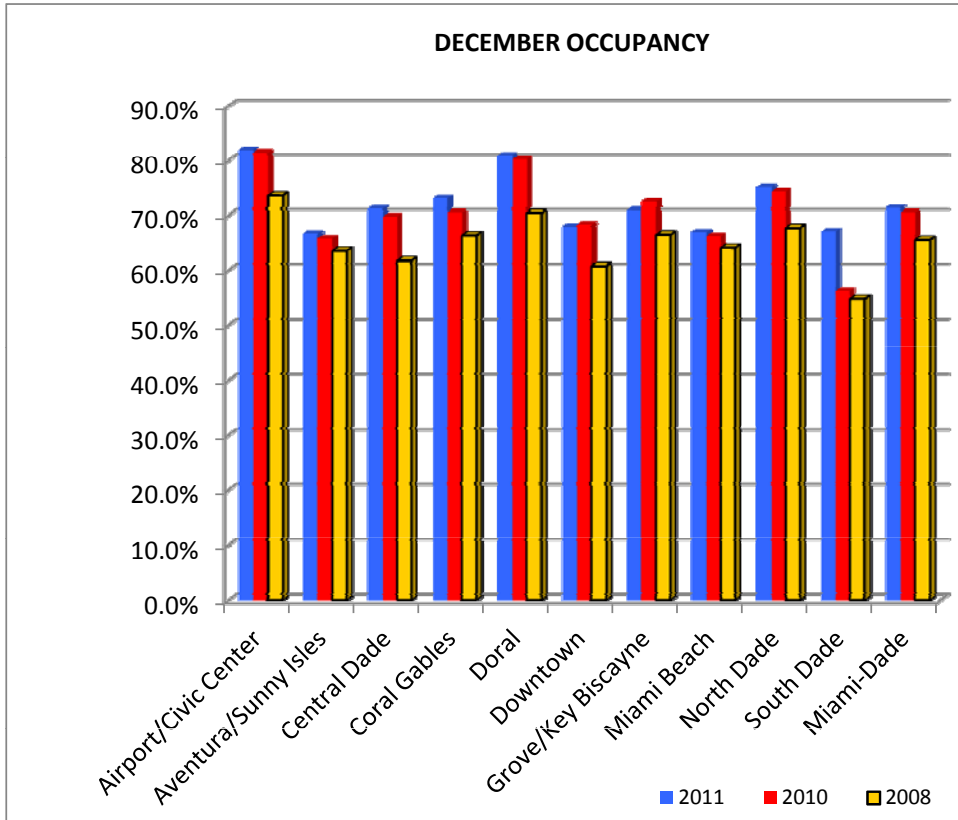


GREATER MIAMI CONVENTION AND VISITORS BUREAU

MIAMI - DADE OCCUPANCY BY REGION

	<u>DECEMBER</u>					<u>YEAR TO DATE</u>				
	<u>2011</u>	<u>2010</u>	<u>2008</u>	<u>% Change 11 vs 10</u>	<u>% Change 11 vs 08</u>	<u>2011</u>	<u>2010</u>	<u>2008</u>	<u>% Change 11 vs 10</u>	<u>% Change 11 vs 08</u>
Airport/Civic Center	81.9%	81.5%	73.6%	0.5%	11.3%	82.1%	78.4%	78.1%	4.7%	5.1%
Aventura/Sunny Isles	66.6%	65.8%	63.5%	1.3%	4.9%	73.2%	69.7%	70.6%	4.9%	3.6%
Central Dade	71.2%	69.8%	61.7%	2.0%	15.4%	72.1%	67.4%	65.1%	6.9%	10.8%
Coral Gables	73.1%	70.5%	66.3%	3.7%	10.3%	74.7%	70.5%	67.3%	6.0%	11.0%
Doral	80.9%	80.3%	70.4%	0.8%	14.9%	81.0%	77.2%	75.6%	4.9%	7.1%
Downtown	67.9%	68.2%	60.8%	-0.5%	11.8%	72.6%	67.7%	67.7%	7.2%	7.2%
Grove/Key Biscayne	70.9%	72.5%	66.4%	-2.1%	6.8%	74.7%	70.6%	71.5%	5.9%	4.5%
Miami Beach	66.9%	66.2%	64.0%	1.1%	4.5%	75.3%	68.5%	72.4%	9.9%	4.0%
North Dade	75.1%	74.3%	67.7%	1.0%	10.9%	74.9%	68.7%	69.1%	9.1%	8.4%
South Dade	67.0%	56.2%	54.7%	19.3%	22.5%	63.6%	59.6%	57.5%	6.6%	10.6%
Miami-Dade	71.4%	70.5%	65.5%	1.3%	9.0%	75.6%	70.4%	71.4%	7.4%	5.9%



GREATER MIAMI CONVENTION AND VISITORS BUREAU

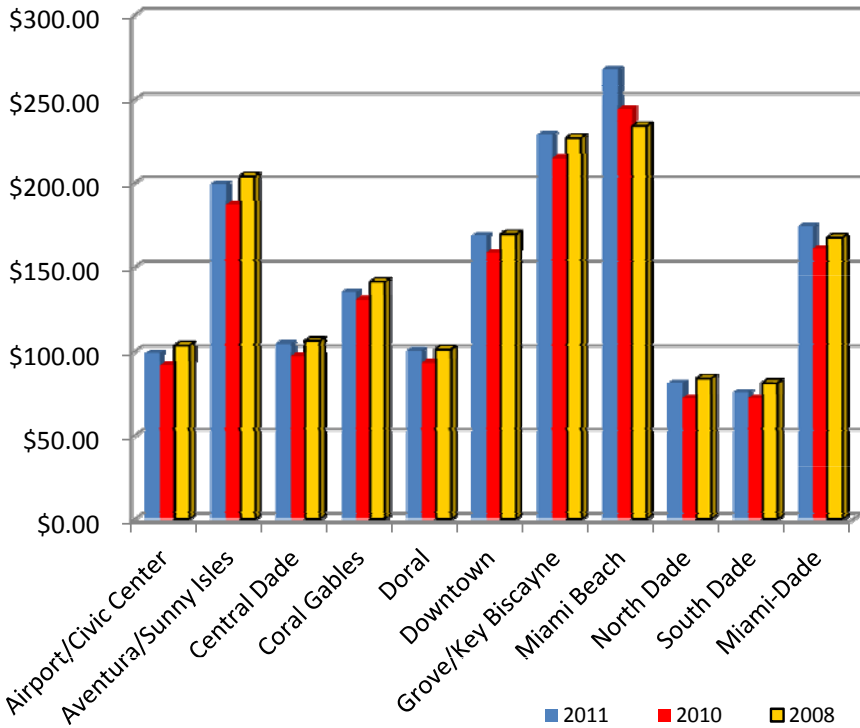
MIAMI - DADE ROOM RATE BY REGION

DECEMBER

YEAR TO DATE

	DECEMBER			% Change		YEAR TO DATE			% Change	
	2011	2010	2008	11 vs 10	11 vs 08	2011	2010	2008	11 vs 10	11 vs 08
Airport/Civic Center	\$98.86	\$91.60	\$103.49	7.9%	-4.5%	\$98.67	\$94.23	\$113.81	4.7%	-13.3%
Aventura/Sunny Isles	\$199.19	\$187.16	\$203.95	6.4%	-2.3%	\$167.32	\$158.92	\$181.54	5.3%	-7.8%
Central Dade	\$104.60	\$97.08	\$106.29	7.7%	-1.6%	\$102.25	\$100.43	\$119.74	1.8%	-14.6%
Coral Gables	\$135.38	\$130.97	\$141.64	3.4%	-4.4%	\$130.52	\$128.29	\$160.08	1.7%	-18.5%
Doral	\$100.54	\$93.05	\$101.28	8.0%	-0.7%	\$100.84	\$96.20	\$109.38	4.8%	-7.8%
Downtown	\$168.55	\$158.61	\$169.20	6.3%	-0.4%	\$156.97	\$150.31	\$175.06	4.4%	-10.3%
Grove/Key Biscayne	\$228.63	\$214.90	\$226.75	6.4%	0.8%	\$192.14	\$184.98	\$221.91	3.9%	-13.4%
Miami Beach	\$267.92	\$243.97	\$233.80	9.8%	14.6%	\$211.23	\$197.56	\$202.76	6.9%	4.2%
North Dade	\$81.26	\$72.17	\$84.12	12.6%	-3.4%	\$77.38	\$76.27	\$92.25	1.5%	-16.1%
South Dade	\$75.73	\$72.23	\$81.24	4.8%	-6.8%	\$76.40	\$75.20	\$88.08	1.6%	-13.3%
Miami-Dade	\$174.14	\$161.06	\$167.20	8.1%	4.2%	\$152.95	\$143.98	\$160.14	6.2%	-4.5%

DECEMBER ROOM RATE



YEAR TO DATE ROOM RATE

