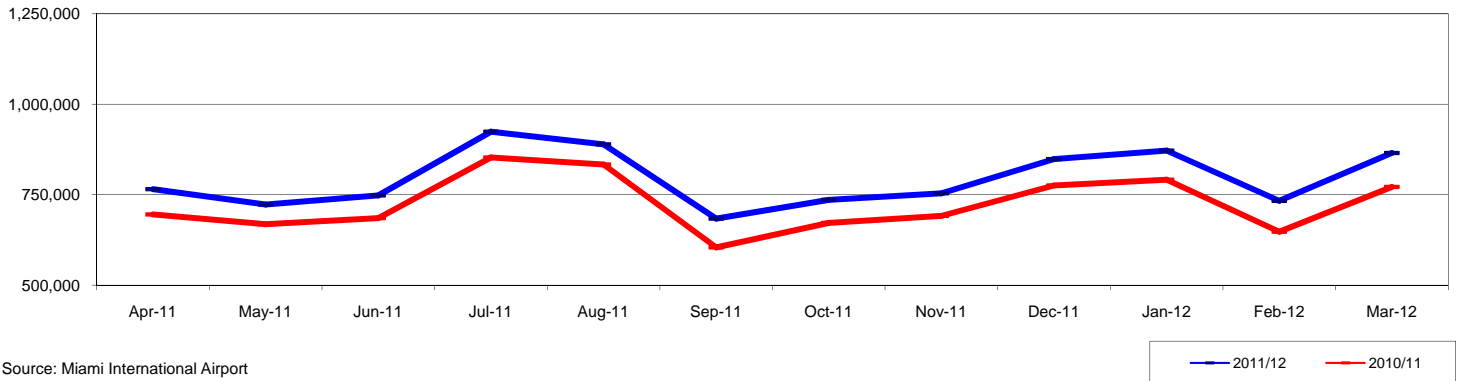


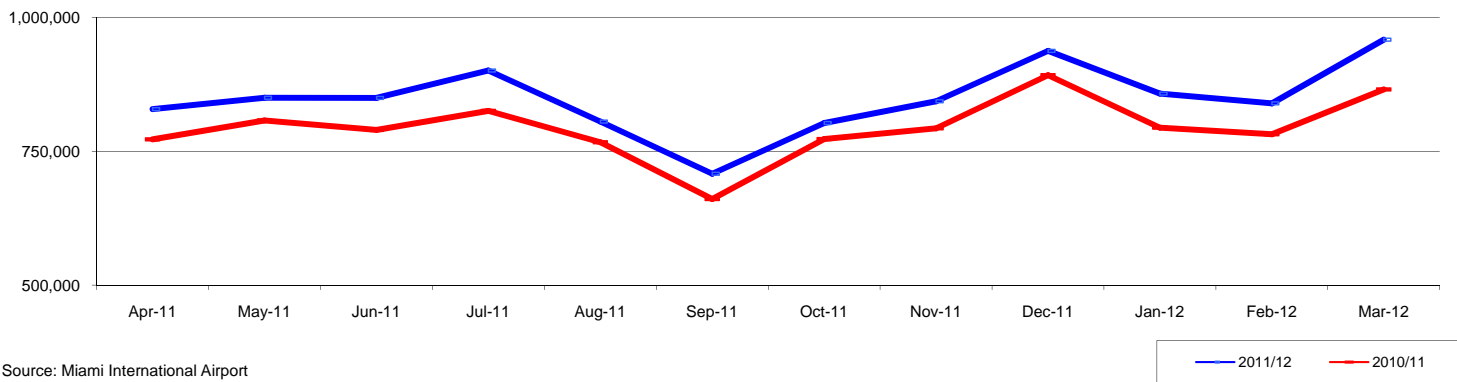
MIAMI AIRPORT INTERNATIONAL ARRIVALS



Source: Miami International Airport

	Apr-11	May-11	Jun-11	Jul-11	Aug-11	Sep-11	Oct-11	Nov-11	Dec-11	Jan-12	Feb-12	Mar-12	Rolling 12 Months	Fiscal Year 2011/2012	Calendar YTD
2011/12	765,317	722,828	748,260	924,312	889,413	684,061	735,775	753,777	848,788	871,902	733,373	865,228	9,543,034	4,808,843	2,470,503
2010/11	695,420	668,638	685,652	853,229	833,697	604,471	672,277	691,612	775,539	791,553	647,962	771,821	8,691,871	4,350,764	2,211,336
% change	10.1%	8.1%	9.1%	8.3%	6.7%	13.2%	9.4%	9.0%	9.4%	10.2%	13.2%	12.1%	9.8%	10.5%	11.7%

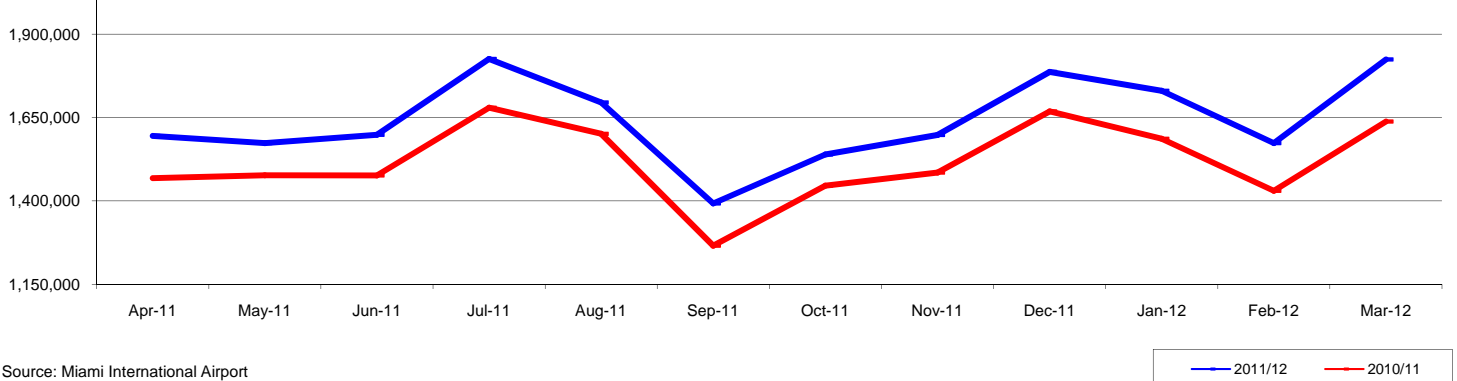
MIAMI AIRPORT DOMESTIC ARRIVALS



Source: Miami International Airport

	Apr-11	May-11	Jun-11	Jul-11	Aug-11	Sep-11	Oct-11	Nov-11	Dec-11	Jan-12	Feb-12	Mar-12	Rolling 12 Months	Fiscal Year 2011/2012	Calendar YTD
2011/12	829,220	850,380	850,013	901,224	805,763	708,202	803,107	843,964	938,124	858,220	839,885	959,052	10,187,154	5,242,352	2,657,157
2010/11	772,499	807,960	790,406	825,751	767,281	661,009	773,328	793,352	892,663	794,601	782,267	866,031	9,527,148	4,902,242	2,442,899
% change	7.3%	5.3%	7.5%	9.1%	5.0%	7.1%	3.9%	6.4%	5.1%	8.0%	7.4%	10.7%	6.9%	6.9%	8.8%

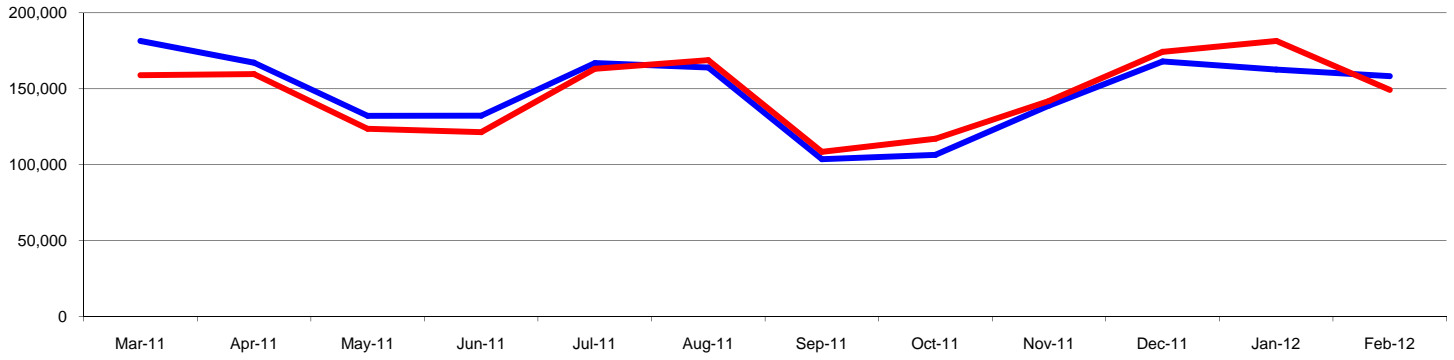
MIAMI AIRPORT TOTAL ARRIVALS



Source: Miami International Airport

	Apr-11	May-11	Jun-11	Jul-11	Aug-11	Sep-11	Oct-11	Nov-11	Dec-11	Jan-12	Feb-12	Mar-12	Rolling 12 Months	Fiscal Year 2011/2012	Calendar YTD
2011/12	1,594,537	1,573,208	1,598,273	1,825,536	1,695,176	1,392,263	1,538,882	1,597,741	1,786,912	1,730,122	1,573,258	1,824,280	19,730,188	10,051,195	5,127,660
2010/11	1,467,919	1,476,598	1,476,058	1,678,980	1,600,978	1,265,480	1,445,605	1,484,964	1,668,202	1,586,154	1,430,229	1,637,852	18,219,019	9,253,006	4,654,235
% change	8.6%	6.5%	8.3%	8.7%	5.9%	10.0%	6.5%	7.6%	7.1%	9.1%	10.0%	11.4%	8.3%	8.6%	10.2%

FORT LAUDERDALE AIRPORT INTERNATIONAL ARRIVALS

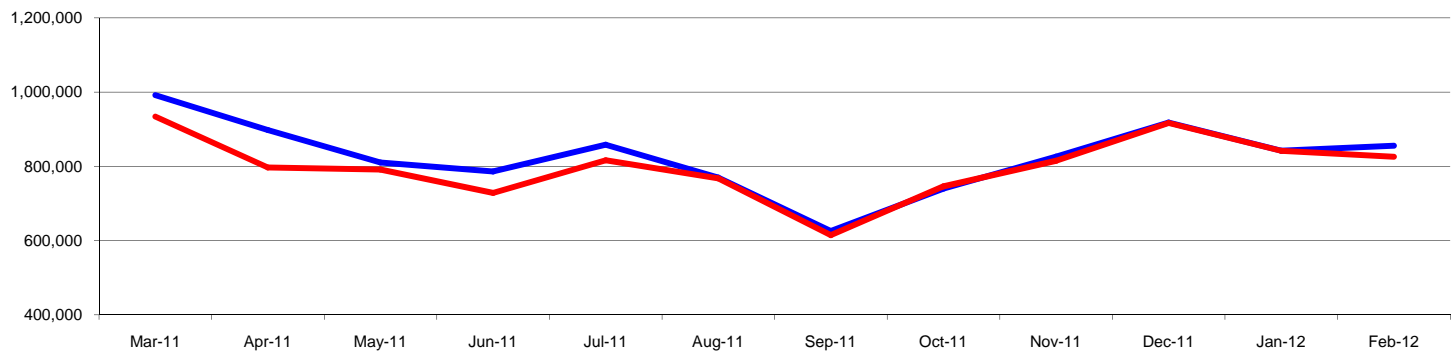


Source: Broward Aviation

— 2011/12 — 2010/11

	Mar-11	Apr-11	May-11	Jun-11	Jul-11	Aug-11	Sep-11	Oct-11	Nov-11	Dec-11	Jan-12	Feb-12	Rolling 12 Months	Fiscal Year 2011/2012	Calendar YTD
2011/12	181,466	167,155	132,210	132,309	166,879	163,985	103,588	106,497	138,845	167,987	162,568	158,295	1,781,784	734,192	320,863
2010/11	158,899	159,610	123,675	121,439	163,105	168,831	108,485	117,071	141,914	174,262	181,484	149,235	1,768,010	763,966	330,719
% change	14.2%	4.7%	6.9%	9.0%	2.3%	-2.9%	-4.5%	-9.0%	-2.2%	-3.6%	-10.4%	6.1%	0.8%	-3.9%	-3.0%

FORT LAUDERDALE AIRPORT DOMESTIC ARRIVALS

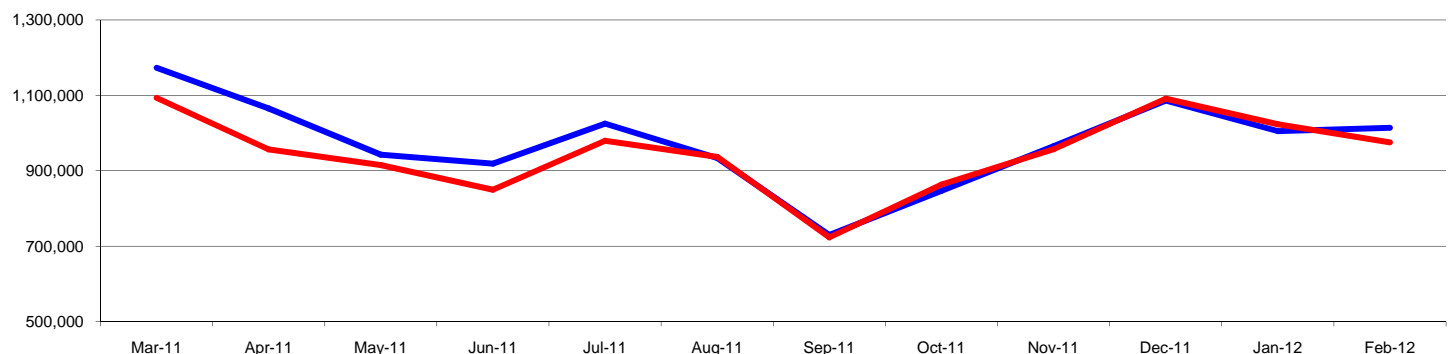


Source: Broward Aviation

— 2011/12 — 2010/11

	Mar-11	Apr-11	May-11	Jun-11	Jul-11	Aug-11	Sep-11	Oct-11	Nov-11	Dec-11	Jan-12	Feb-12	Rolling 12 Months	Fiscal Year 2011/2012	Calendar YTD
2011/12	991,838	898,094	810,351	786,483	858,205	769,984	626,085	740,325	826,333	918,341	842,354	855,618	9,924,011	4,182,971	1,697,972
2010/11	934,270	797,152	791,464	728,499	816,620	767,813	614,906	746,168	815,411	917,051	842,000	825,936	9,597,290	4,146,566	1,667,936
% change	6.2%	12.7%	2.4%	8.0%	5.1%	0.3%	1.8%	-0.8%	1.3%	0.1%	0.0%	3.6%	3.4%	0.9%	1.8%

FORT LAUDERDALE AIRPORT TOTAL ARRIVALS

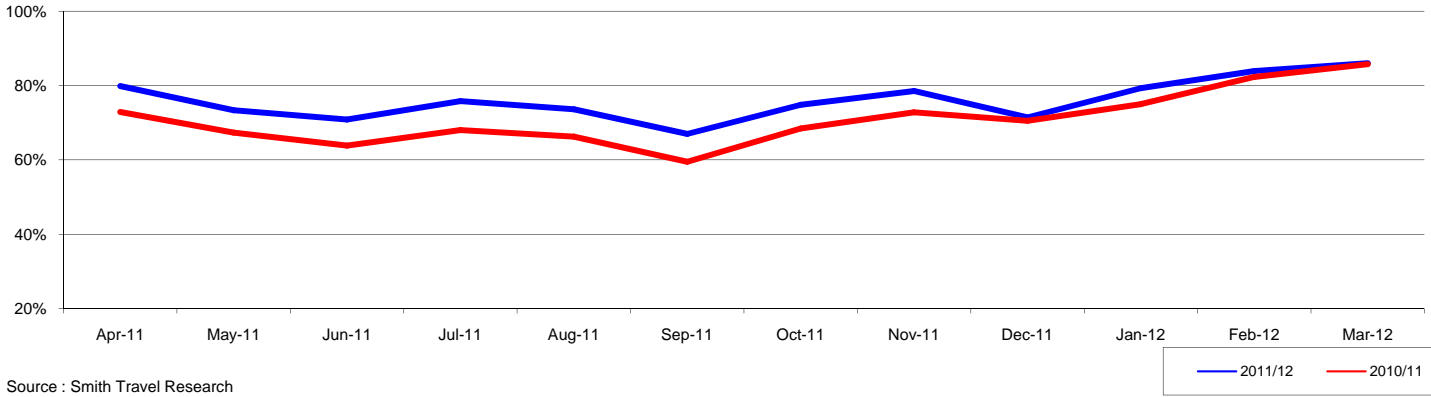


Source: Broward Aviation

— 2011/12 — 2010/11

	Mar-11	Apr-11	May-11	Jun-11	Jul-11	Aug-11	Sep-11	Oct-11	Nov-11	Dec-11	Jan-12	Feb-12	Rolling 12 Months	Fiscal Year 2011/2012	Calendar YTD
2011/12	1,173,304	1,065,249	942,561	918,792	1,025,084	933,969	729,673	846,822	965,178	1,086,328	1,004,922	1,013,913	11,705,795	4,917,163	2,018,835
2010/11	1,093,169	956,762	915,139	849,938	979,725	936,644	723,391	863,239	957,325	1,091,313	1,023,484	975,171	11,365,300	4,910,532	1,998,655
% change	7.3%	11.3%	3.0%	8.1%	4.6%	-0.3%	0.9%	-1.9%	0.8%	-0.5%	-1.8%	4.0%	3.0%	0.1%	1.0%

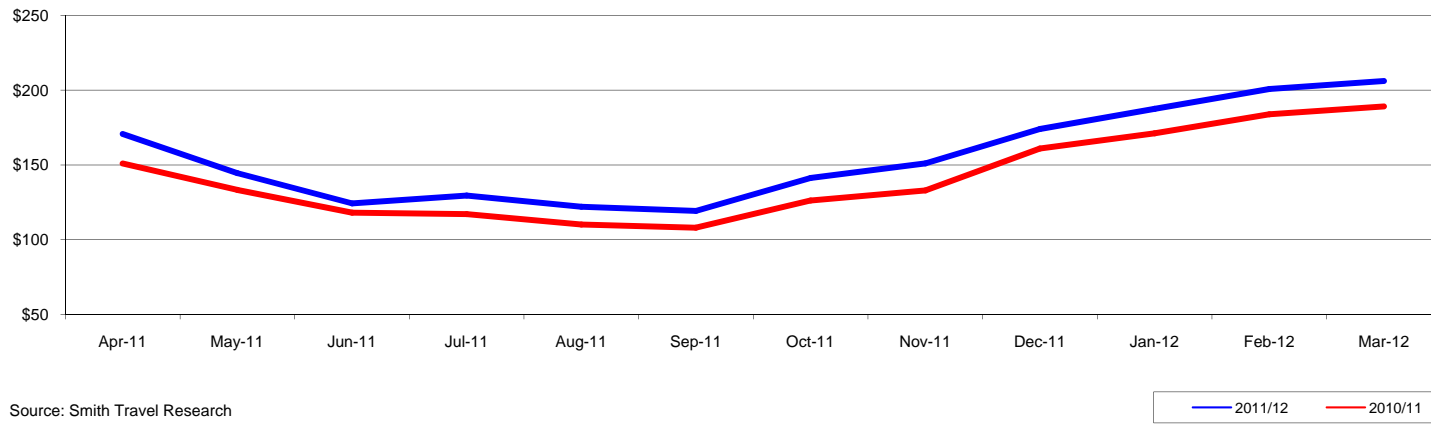
GREATER MIAMI OCCUPANCY



Source : Smith Travel Research

	Apr-11	May-11	Jun-11	Jul-11	Aug-11	Sep-11	Oct-11	Nov-11	Dec-11	Jan-12	Feb-12	Mar-12	Rolling 12 Months	Fiscal Year 2011/2012	Calendar YTD
2011/12	79.8%	73.4%	70.9%	75.8%	73.6%	67.0%	74.8%	78.5%	71.4%	79.3%	83.9%	86.0%	76.2%	79.0%	82.9%
2010/11	72.9%	67.3%	63.8%	68.0%	66.2%	59.5%	68.4%	72.8%	70.5%	75.0%	82.3%	85.7%	71.1%	75.8%	81.0%
% change	9.5%	8.9%	11.0%	11.5%	11.1%	12.6%	9.3%	7.8%	1.3%	5.7%	1.9%	0.3%	7.2%	4.2%	2.4%

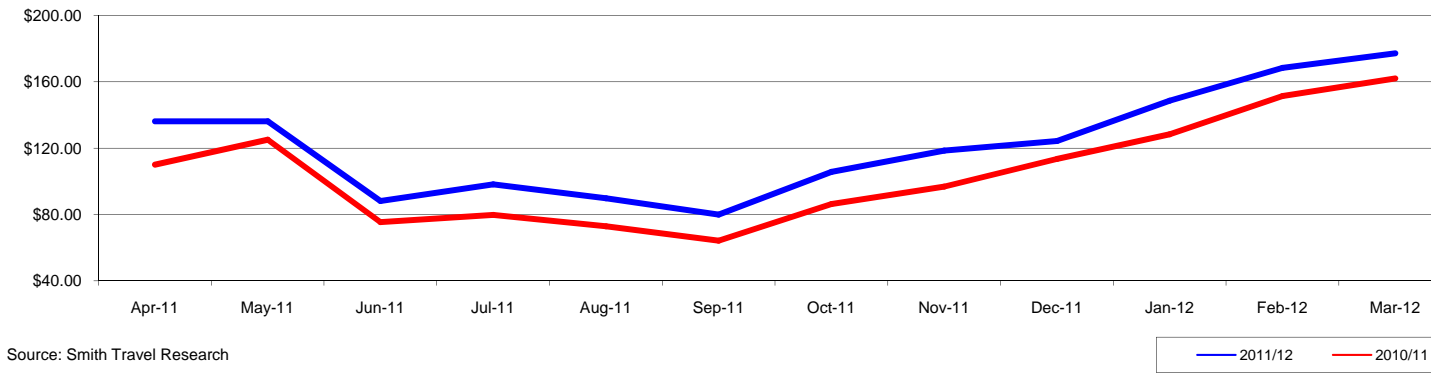
GREATER MIAMI ROOM RATE



Source: Smith Travel Research

	Apr-11	May-11	Jun-11	Jul-11	Aug-11	Sep-11	Oct-11	Nov-11	Dec-11	Jan-12	Feb-12	Mar-12	Rolling 12 Months	Fiscal Year 2011/2012	Calendar YTD
2011/12	\$170.73	\$144.52	\$124.40	\$129.58	\$122.14	\$119.37	\$141.37	\$151.10	\$174.14	\$187.55	\$200.85	\$206.16	\$155.99	\$176.86	\$198.51
2010/11	\$150.97	\$133.35	\$118.19	\$117.19	\$110.23	\$108.07	\$126.26	\$133.05	\$161.06	\$171.21	\$183.98	\$189.19	\$141.90	\$160.79	\$181.69
% change	13.1%	8.4%	5.3%	10.6%	10.8%	10.5%	12.0%	13.6%	8.1%	9.5%	9.2%	9.0%	9.9%	10.0%	9.3%

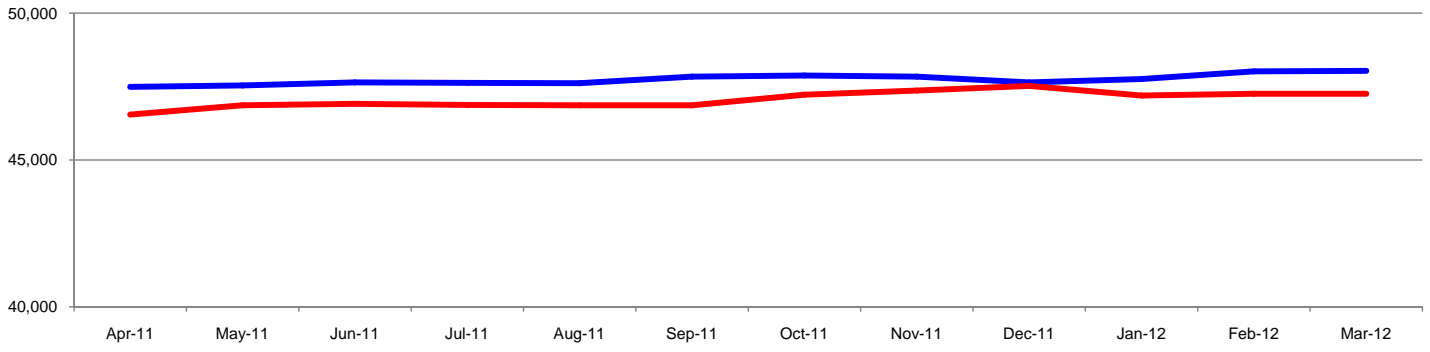
GREATER MIAMI REV PAR



Source: Smith Travel Research

	Apr-11	May-11	Jun-11	Jul-11	Aug-11	Sep-11	Oct-11	Nov-11	Dec-11	Jan-12	Feb-12	Mar-12	Rolling 12 Months	Fiscal Year 2011/2012	Calendar YTD
2011/12	\$136.25	\$136.26	\$88.15	\$98.26	\$89.86	\$79.94	\$105.71	\$118.58	\$124.38	\$148.71	\$168.49	\$177.24	\$122.65	\$140.52	\$164.57
2010/11	\$110.07	\$125.16	\$75.43	\$79.74	\$72.93	\$64.26	\$86.35	\$96.85	\$113.59	\$128.43	\$151.46	\$162.12	\$105.53	\$123.13	\$147.09
% change	23.8%	8.9%	16.9%	23.2%	23.2%	24.4%	22.4%	22.4%	9.5%	15.8%	11.2%	9.3%	16.2%	14.1%	11.9%

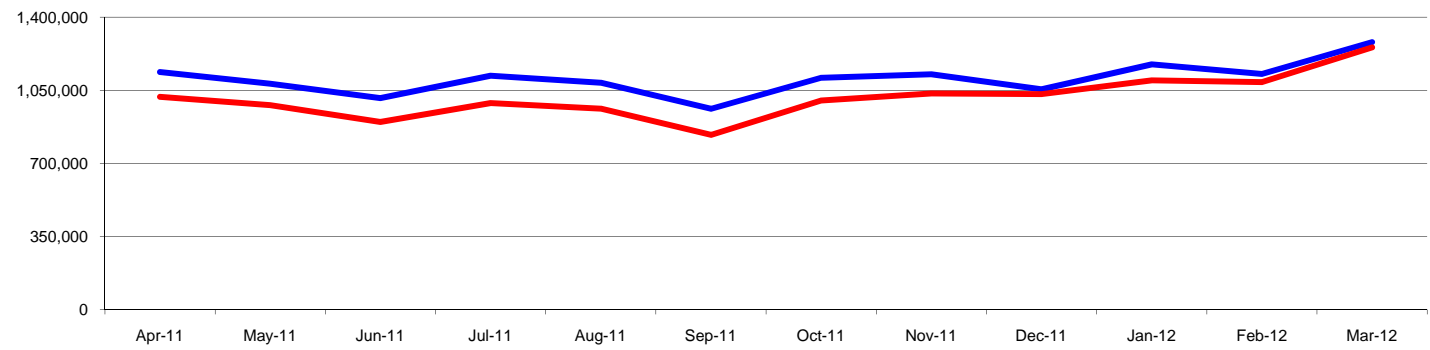
GREATER MIAMI LODGING ROOM INVENTORY



Source: Smith Travel Research

	Apr-11	May-11	Jun-11	Jul-11	Aug-11	Sep-11	Oct-11	Nov-11	Dec-11	Jan-12	Feb-12	Mar-12	Rolling 12 Months	Fiscal Year 2011/2012	Calendar YTD
2011/12	47,493	47,541	47,645	47,625	47,616	47,841	47,879	47,838	47,642	47,756	48,021	48,038	47,745	47,862	47,938
2010/11	46,547	46,867	46,913	46,873	46,867	46,865	47,223	47,366	47,524	47,197	47,256	47,259	47,063	47,304	47,237
% change	2.0%	1.4%	1.6%	1.6%	1.6%	2.1%	1.4%	1.0%	0.2%	1.2%	1.6%	1.6%	1.4%	1.2%	1.5%

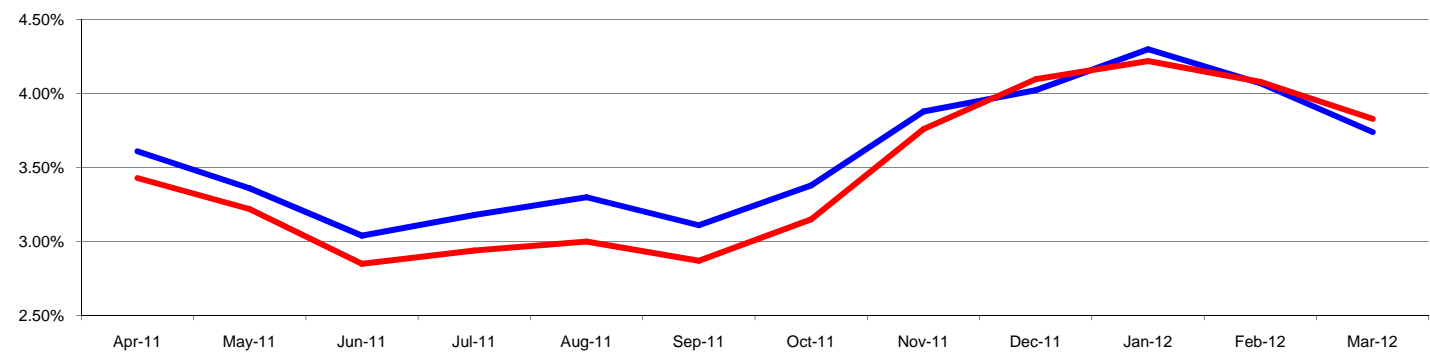
GREATER MIAMI HOTEL ROOMS SOLD



Source: Smith Travel Research

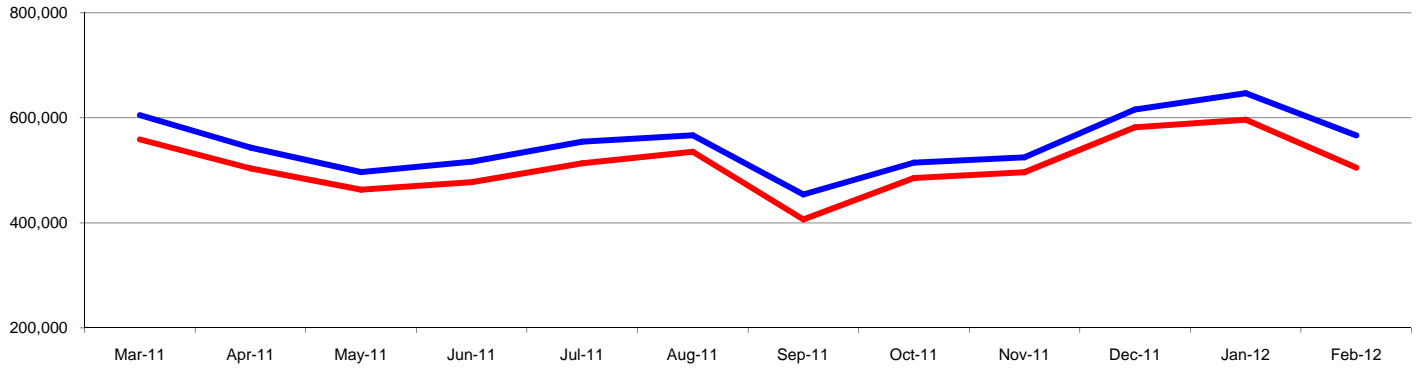
	Apr-11	May-11	Jun-11	Jul-11	Aug-11	Sep-11	Oct-11	Nov-11	Dec-11	Jan-12	Feb-12	Mar-12	Rolling 12 Months	Fiscal Year 2011/2012	Calendar YTD
2011/12	1,137,006	1,081,158	1,012,824	1,119,535	1,085,964	961,176	1,109,838	1,126,304	1,054,910	1,173,843	1,128,001	1,280,278	13,270,837	6,873,174	3,582,122
2010/11	1,018,133	978,471	898,179	988,657	961,663	836,033	1,001,174	1,034,386	1,031,640	1,097,549	1,089,265	1,255,379	12,190,529	6,509,393	3,442,193
% change	11.7%	10.5%	12.8%	13.2%	12.9%	15.0%	10.9%	8.9%	2.3%	7.0%	3.6%	2.0%	8.9%	5.6%	4.1%

GREATER MIAMI HOTEL ROOMS SOLD SHARE OF TOP 25 MARKETS



	Apr-11	May-11	Jun-11	Jul-11	Aug-11	Sep-11	Oct-11	Nov-11	Dec-11	Jan-12	Feb-12	Mar-12	Rolling 12 Months	Fiscal Year 2011/2012	Calendar YTD
2011/12	3.61%	3.36%	3.04%	3.18%	3.30%	3.11%	3.38%	3.88%	4.02%	4.30%	4.07%	3.74%	3.58%	3.90%	4.04%
2010/11	3.43%	3.22%	2.85%	2.94%	3.00%	2.87%	3.15%	3.76%	4.10%	4.22%	4.08%	3.83%	3.45%	3.86%	4.04%
% change	5.2%	4.3%	6.7%	8.2%	10.0%	8.4%	7.3%	3.2%	-1.8%	1.9%	-0.2%	-2.3%	3.7%	1.1%	-0.2%

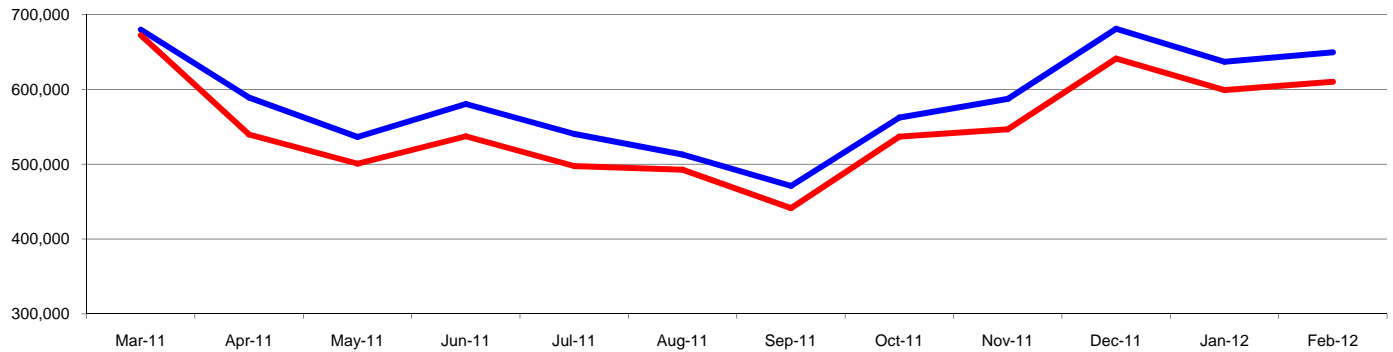
GREATER MIAMI INTERNATIONAL VISITORS



Source: Synovate Research

	Mar-11	Apr-11	May-11	Jun-11	Jul-11	Aug-11	Sep-11	Oct-11	Nov-11	Dec-11	Jan-12	Feb-12	Rolling 12 Months	Fiscal Year 2011/2012	Calendar YTD
2011/12	605,200	543,600	496,900	516,800	554,688	566,800	454,300	514,800	524,900	616,000	647,000	566,700	6,607,688	2,869,400	1,213,700
2010/11	559,100	504,000	463,400	477,600	513,600	535,700	406,700	485,700	496,500	582,200	596,500	505,200	6,126,200	2,666,100	1,101,700
% change	8.2%	7.9%	7.2%	8.2%	8.0%	5.8%	11.7%	6.0%	5.7%	5.8%	8.5%	12.2%	7.9%	7.6%	10.2%

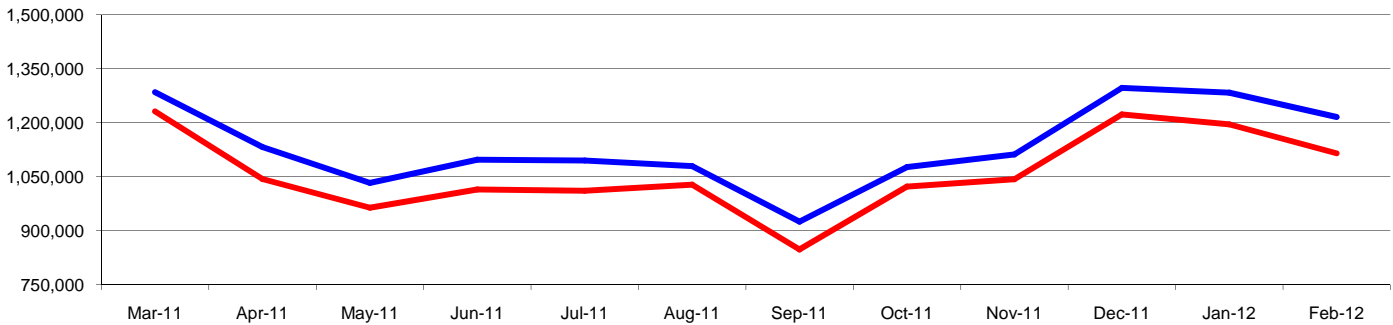
GREATER MIAMI DOMESTIC VISITORS



Source: Synovate Research

	Mar-11	Apr-11	May-11	Jun-11	Jul-11	Aug-11	Sep-11	Oct-11	Nov-11	Dec-11	Jan-12	Feb-12	Rolling 12 Months	Fiscal Year 2011/2012	Calendar YTD
2011/12	679,800	588,900	536,200	580,400	540,285	512,900	471,000	562,100	587,200	680,800	636,800	649,300	7,025,685	3,116,200	1,286,100
2010/11	672,300	539,500	500,700	537,100	497,500	492,500	441,100	536,800	546,600	641,000	598,900	610,000	6,614,000	2,933,300	1,208,900
% change	1.1%	9.2%	7.1%	8.1%	8.6%	4.1%	6.8%	4.7%	7.4%	6.2%	6.3%	6.4%	6.2%	6.2%	6.4%

GREATER MIAMI TOTAL VISITORS

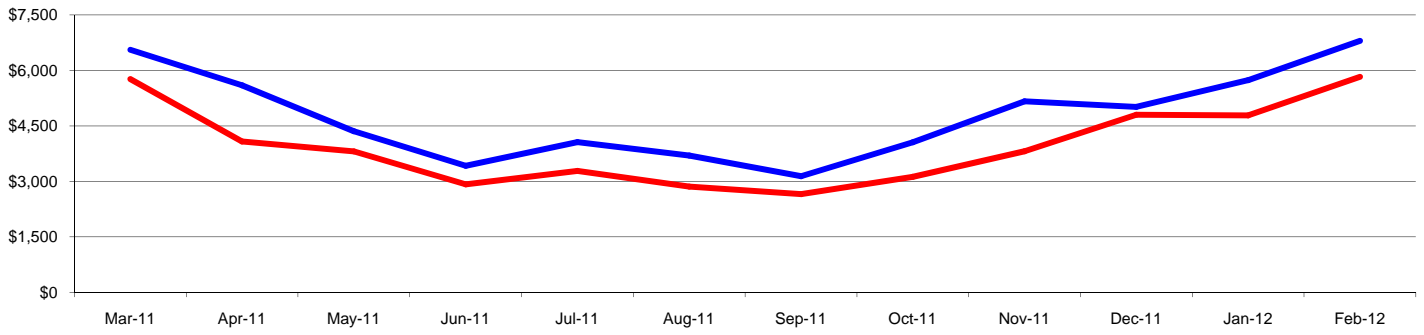


Source: Synovate Research

	Mar-11	Apr-11	May-11	Jun-11	Jul-11	Aug-11	Sep-11	Oct-11	Nov-11	Dec-11	Jan-12	Feb-12	Rolling 12 Months	Fiscal Year 2011/2012	Calendar YTD
2011/12	1,285,000	1,132,500	1,033,100	1,097,200	1,094,973	1,079,700	925,300	1,076,900	1,112,100	1,296,800	1,283,800	1,216,000	13,633,373	5,985,600	2,499,800
2010/11	1,231,400	1,043,500	964,100	1,014,700	1,011,100	1,028,200	847,800	1,022,500	1,043,100	1,223,200	1,195,400	1,115,200	12,740,200	5,599,400	2,310,600
% change	4.4%	8.5%	7.2%	8.1%	8.3%	5.0%	9.1%	5.3%	6.6%	6.0%	7.4%	9.0%	7.0%	6.9%	8.2%

MIAMI-DADE COUNTY CONVENTION DEVELOPMENT TAX (000)

CDT Tax is a 3% tax on hotel room rate collected in all hotels exclusive of Bal Harbor and Surfside. This revenue is for building and maintain public facilities

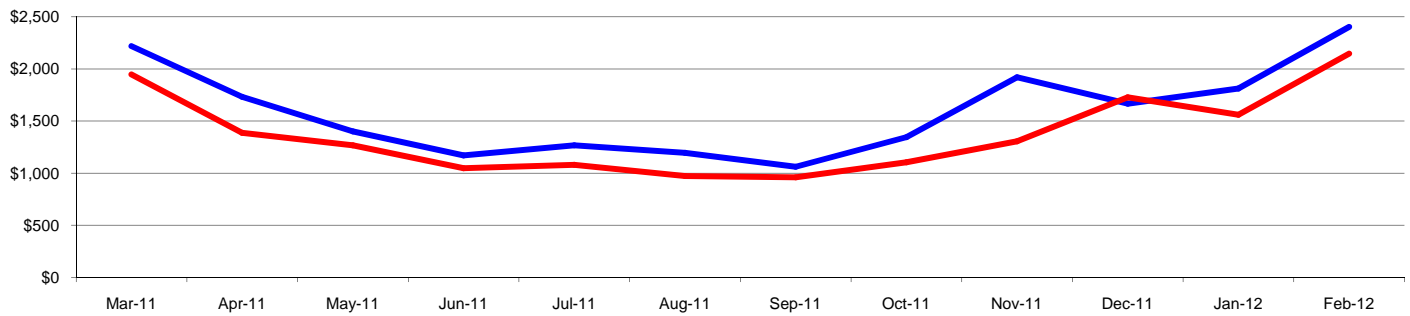


Source: Miami-Dade Tourist Tax Collectors

	Mar-11	Apr-11	May-11	Jun-11	Jul-11	Aug-11	Sep-11	Oct-11	Nov-11	Dec-11	Jan-12	Feb-12	Rolling 12 Months	Fiscal Year 2011/2012	Calendar YTD
2011/12	\$6,556	\$5,598	\$4,354	\$3,423	\$4,063	\$3,698	\$3,140	\$4,057	\$5,166	\$5,015	\$5,736	\$6,798	\$57,606	\$26,773	\$12,535
2010/11	\$5,767	\$4,080	\$3,810	\$2,921	\$3,283	\$2,859	\$2,655	\$3,122	\$3,816	\$4,803	\$4,785	\$5,826	\$47,728	\$22,352	\$10,611
% change	13.7%	37.2%	14.3%	17.2%	23.8%	29.3%	18.3%	29.9%	35.4%	4.4%	19.9%	16.7%	20.7%	19.8%	18.1%

MIAMI-DADE RESORT TAX (000)

Miami Dade Resort tax is a 2% tax on hotel room rate, excluding Bal Harbor, Miami Beach and Surfside properties. This money funds the GMCVB and TDC

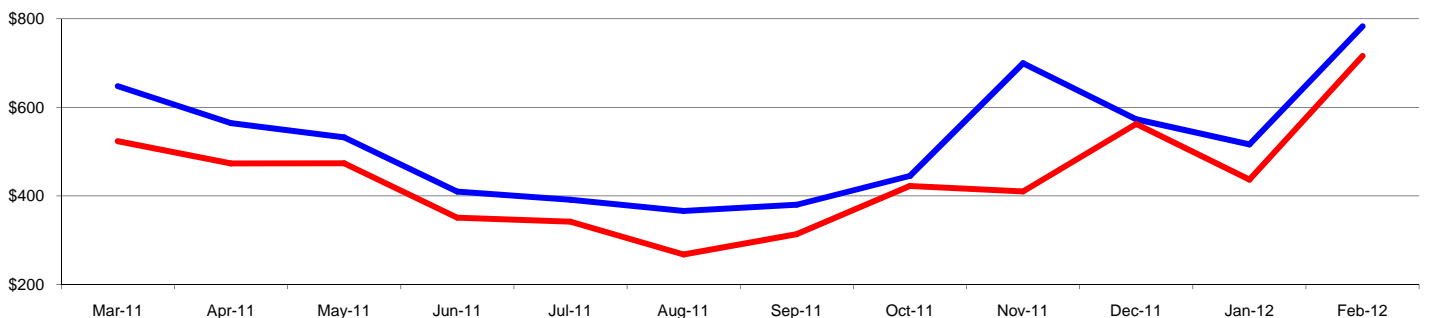


Source: Miami-Dade Tourist Tax Collectors

	Mar-11	Apr-11	May-11	Jun-11	Jul-11	Aug-11	Sep-11	Oct-11	Nov-11	Dec-11	Jan-12	Feb-12	Rolling 12 Months	Fiscal Year 2011/2012	Calendar YTD
2011/12	\$2,219.3	\$1,732.8	\$1,401.0	\$1,170.3	\$1,266.3	\$1,194.2	\$1,061.9	\$1,345.6	\$1,920.3	\$1,666.2	\$1,811.8	\$2,403.0	\$19,192.8	\$9,147.0	\$4,214.9
2010/11	\$1,947.3	\$1,386.1	\$1,267.6	\$1,047.3	\$1,080.0	\$972.1	\$959.2	\$1,103.7	\$1,306.0	\$1,727.0	\$1,560.9	\$2,147.5	\$16,504.8	\$7,845.2	\$3,708.4
% change	14.0%	25.0%	10.5%	11.8%	17.3%	22.8%	10.7%	21.9%	47.0%	-3.5%	16.1%	11.9%	16.3%	16.6%	13.7%

MIAMI-DADE 2% HOTEL FOOD & BEVERAGE TAX (000)

Miami-Dade 2% F & B Tax is charged on food and beverages purchased in hotels excluding Bal Harbor, Miami Beach and Surfside.

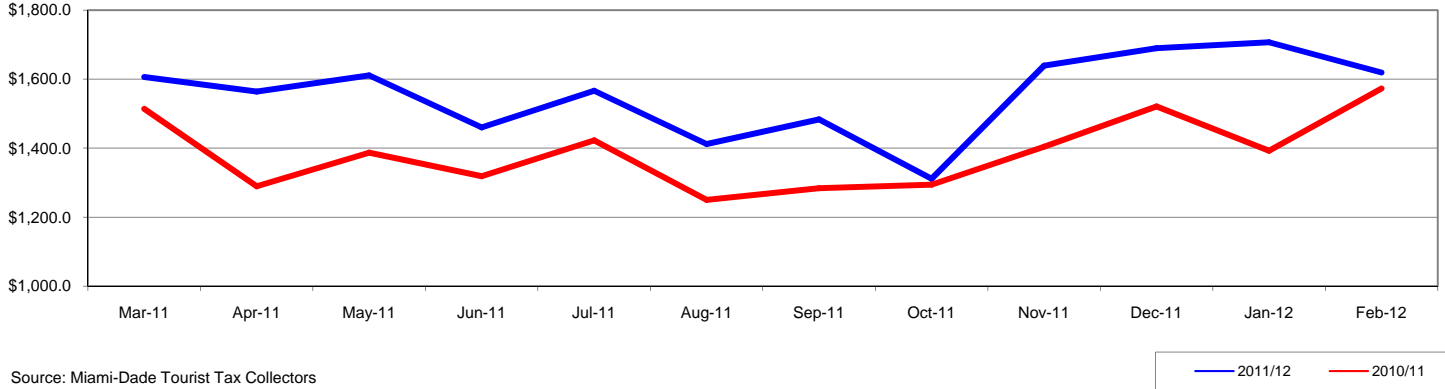


Source: Miami-Dade Tourist Tax Collectors

	Mar-11	Apr-11	May-11	Jun-11	Jul-11	Aug-11	Sep-11	Oct-11	Nov-11	Dec-11	Jan-12	Feb-12	Rolling 12 Months	Fiscal Year 2011/2012	Calendar YTD
2011/12	\$647.7	\$564.5	\$532.0	\$409.7	\$391.3	\$365.8	\$380.0	\$444.9	\$699.4	\$573.0	\$516.3	\$782.9	\$6,307.4	\$3,016.5	\$1,299.2
2010/11	\$523.4	\$473.3	\$473.7	\$350.6	\$341.9	\$267.5	\$313.4	\$422.4	\$409.9	\$562.6	\$436.6	\$716.3	\$5,291.5	\$2,547.9	\$1,152.9
% change	23.7%	19.3%	12.3%	16.8%	14.5%	36.8%	21.3%	5.3%	70.6%	1.8%	18.2%	9.3%	19.2%	18.4%	12.7%

MIAMI-DADE 1% RESTAURANT FOOD AND BEVERAGE TAX (000)

Miami-Dade 1% F & B Tax is charged on food and beverages purchased in restaurants not in hotels excluding Bal Harbor, Miami Beach and Surfside.

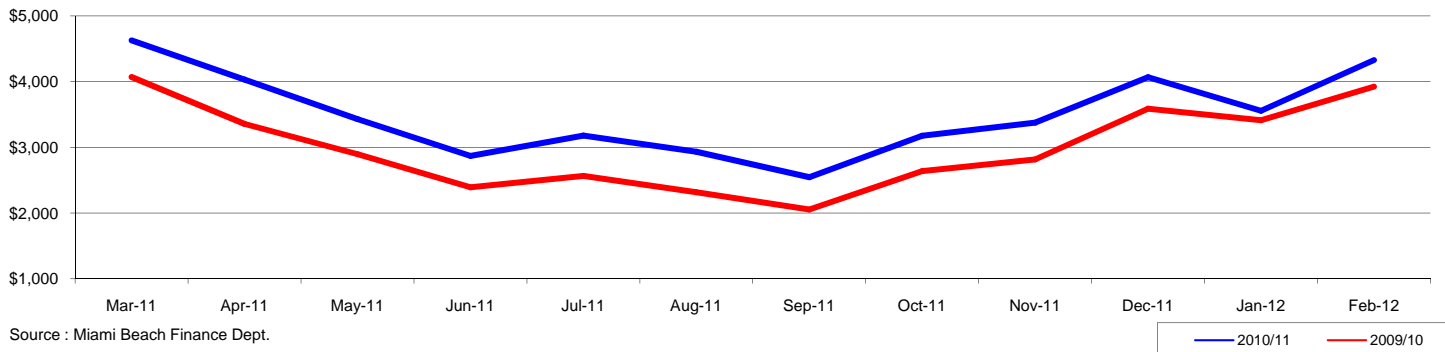


Source: Miami-Dade Tourist Tax Collectors

	Mar-11	Apr-11	May-11	Jun-11	Jul-11	Aug-11	Sep-11	Oct-11	Nov-11	Dec-11	Jan-12	Feb-12	Rolling 12 Months	Fiscal Year 2011/2012	Calendar YTD
2011/12	\$1,606.1	\$1,564.0	\$1,610.7	\$1,460.0	\$1,566.5	\$1,411.8	\$1,483.4	\$1,311.2	\$1,639.2	\$1,689.4	\$1,706.6	\$1,619.4	\$18,668.2	\$7,965.7	\$3,326.0
2010/11	\$1,513.7	\$1,289.2	\$1,386.6	\$1,318.6	\$1,422.5	\$1,249.9	\$1,283.8	\$1,293.9	\$1,403.7	\$1,520.9	\$1,392.1	\$1,573.0	\$16,647.9	\$7,183.7	\$2,965.1
% change	6.1%	21.3%	16.2%	10.7%	10.1%	13.0%	15.6%	1.3%	16.8%	11.1%	22.6%	3.0%	12.1%	10.9%	12.2%

**MIAMI BEACH RESORT TAX (000)
includes F&B Tax**

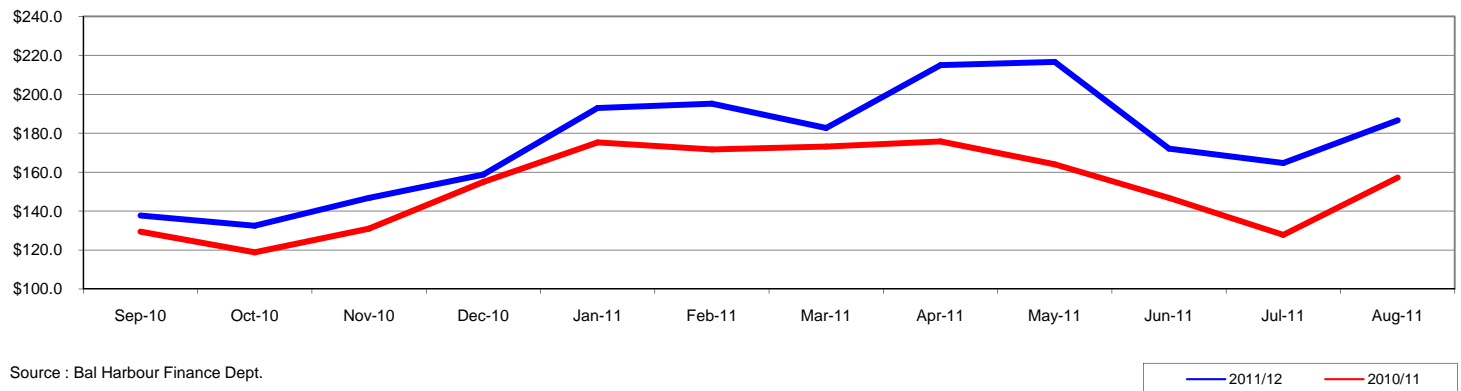
Miami Beach resort tax is charged on hotel room rates(3%) and food and beverages in restaurants and hotels (2%) in Miami Beach



Source : Miami Beach Finance Dept.

	Mar-11	Apr-11	May-11	Jun-11	Jul-11	Aug-11	Sep-11	Oct-11	Nov-11	Dec-11	Jan-12	Feb-12	Rolling 12 Months	Fiscal Year 2011/2012	Calendar YTD
2010/11	\$4,629.3	\$4,031.4	\$3,431.0	\$2,869.2	\$3,180.1	\$2,933.0	\$2,547.0	\$3,177.7	\$3,376.7	\$4,067.4	\$3,556.2	\$4,328.6	\$42,127.5	\$18,506.6	\$42,127.5
2009/10	\$4,069.6	\$3,357.4	\$2,897.4	\$2,393.1	\$2,565.8	\$2,317.0	\$2,054.1	\$2,637.8	\$2,817.8	\$3,589.7	\$3,414.0	\$3,925.2	\$36,038.9	\$16,384.4	\$36,038.9
% change	13.8%	20.1%	18.4%	19.9%	23.9%	26.6%	24.0%	20.5%	19.8%	13.3%	4.2%	10.3%	16.9%	13.0%	16.9%

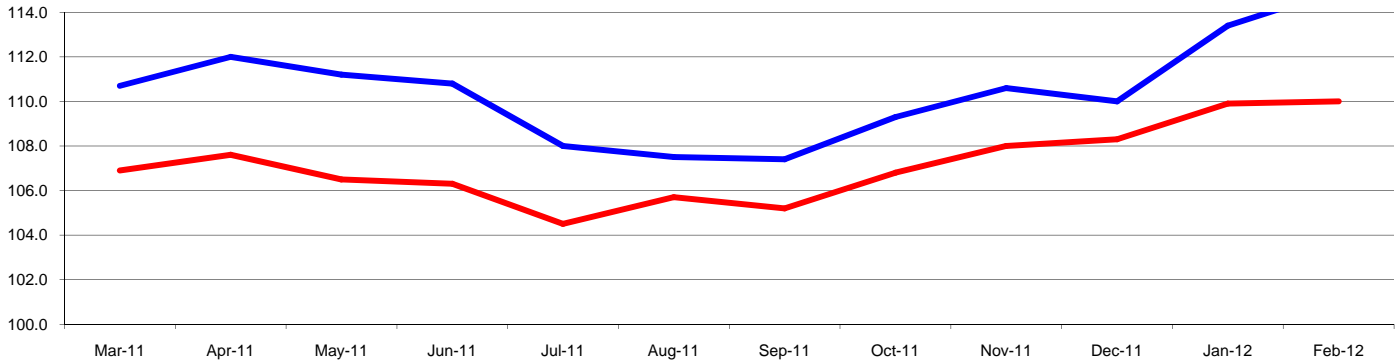
**BAL HARBOUR RESORT TAX (000)
includes F&B Tax**



Source : Bal Harbour Finance Dept.

	Sep-10	Oct-10	Nov-10	Dec-10	Jan-11	Feb-11	Mar-11	Apr-11	May-11	Jun-11	Jul-11	Aug-11	Rolling 12 Months	Fiscal Year 2010/2011	Calendar YTD
2011/12	\$137.7	\$132.5	\$146.8	\$158.7	\$193.0	\$195.2	\$182.7	\$215.0	\$216.6	\$172.0	\$164.7	\$186.6	\$2,101.5	\$1,963.8	\$1,525.8
2010/11	\$129.5	\$118.9	\$131.0	\$155.0	\$175.3	\$171.7	\$173.1	\$175.8	\$164.0	\$146.8	\$127.8	\$157.2	\$1,826.0	\$1,696.6	\$1,291.7
% change	6.4%	11.4%	12.0%	2.4%	10.1%	13.7%	5.5%	22.3%	32.1%	17.2%	28.9%	18.7%	15.1%	15.8%	18.1%

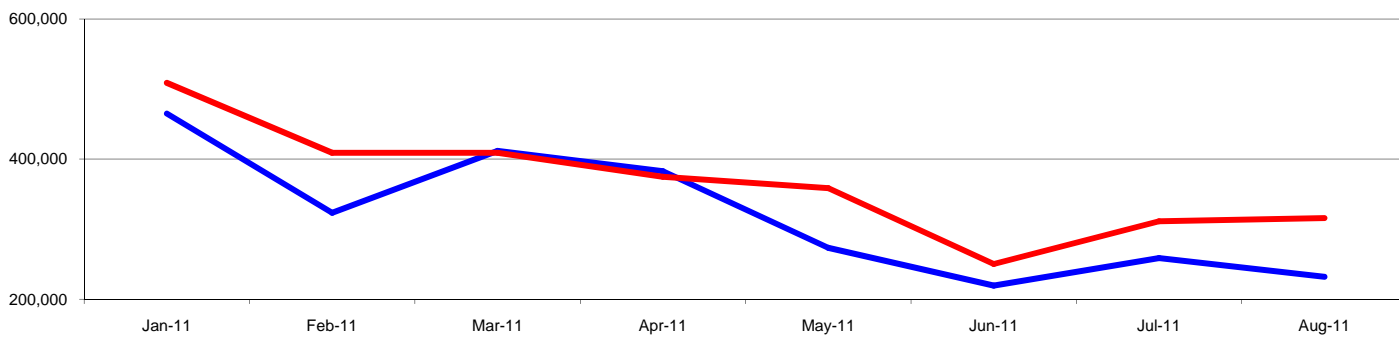
MIAMI-DADE LEISURE & HOSPITALITY EMPLOYMENT (000)



Source: Florida Dept of Labor

	Mar-11	Apr-11	May-11	Jun-11	Jul-11	Aug-11	Sep-11	Oct-11	Nov-11	Dec-11	Jan-12	Feb-12	Rolling 12 Months	Fiscal Year 2011/2012	Calendar YTD
2011/12	110.7	112.0	111.2	110.8	108.0	107.5	107.4	109.3	110.6	110.0	113.4	115.0	110.5	111.7	110.5
2010/11	106.9	107.6	106.5	106.3	104.5	105.7	105.2	106.8	108.0	108.3	109.9	110.0	107.1	108.6	107.1
% change	3.6%	4.1%	4.4%	4.2%	3.3%	1.7%	2.1%	2.3%	2.4%	1.6%	3.2%	4.6%	3.1%	2.8%	3.1%

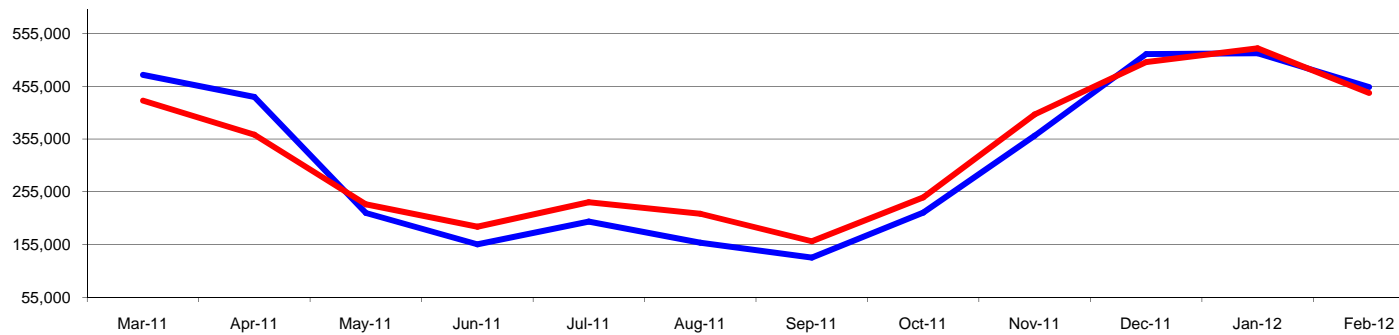
PORT OF MIAMI PASSENGERS



Source: Port of Miami

	Jan-11	Feb-11	Mar-11	Apr-11	May-11	Jun-11	Jul-11	Aug-11	Sep-11	Oct-11	Nov-11	Dec-11	Rolling 12 Months	Fiscal Year 2011/2012	Calendar YTD
2011/12	464,843	323,356	411,768	382,578	273,344	219,311	258,767	232,014	225,681	271,116	347,565	420,236	3,830,579	1,038,917	3,830,579
2010/11	508,712	408,865	408,930	374,732	358,566	250,139	311,150	315,865	249,874	346,513	397,529	403,129	4,334,004	1,147,171	4,334,004
% change	-8.6%	-20.9%	0.7%	2.1%	-23.8%	-12.3%	-16.8%	-26.5%	-9.7%	-21.8%	-12.6%	4.2%	-11.6%	-9.4%	-11.6%

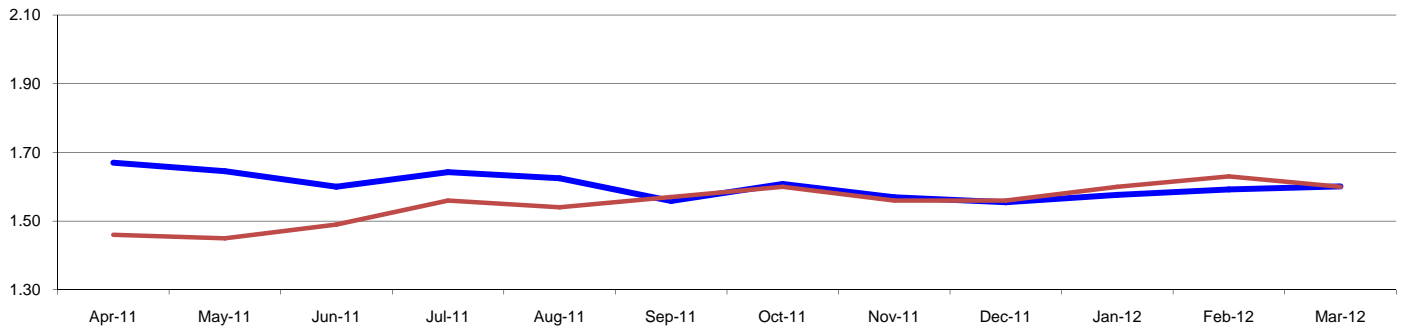
PORT EVERGLADES PASSENGERS



Source: Port Everglades

	Mar-11	Apr-11	May-11	Jun-11	Jul-11	Aug-11	Sep-11	Oct-11	Nov-11	Dec-11	Jan-12	Feb-12	Rolling 12 Months	Fiscal Year 2011/2012	Calendar YTD
2011/12	476,522	434,720	214,780	155,421	198,540	158,317	130,240	215,327	361,164	516,092	517,399	453,638	3,832,160	2,063,620	971,037
2010/11	427,832	363,092	231,232	188,856	235,192	213,245	161,067	244,321	401,609	500,907	526,939	442,366	3,936,658	2,116,142	969,305
% change	11.4%	19.7%	-7.1%	-17.7%	-15.6%	-25.8%	-19.1%	-11.9%	-10.1%	3.0%	-1.8%	2.5%	-2.7%	-2.5%	0.2%

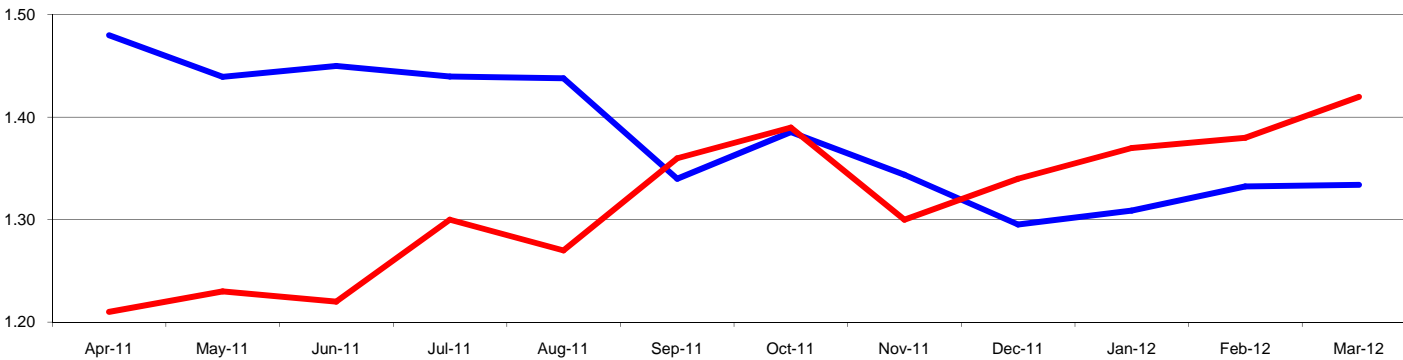
BRITISH POUND TO AMERICAN DOLLAR



Source: Yahoo Finance

	Apr-11	May-11	Jun-11	Jul-11	Aug-11	Sep-11	Oct-11	Nov-11	Dec-11	Jan-12	Feb-12	Mar-12	Rolling 12 Months	Fiscal Year 2011/2012	Calendar YTD
2011/12	1.67	1.65	1.60	1.64	1.63	1.56	1.61	1.57	1.55	1.58	1.59	1.60	1.60	1.58	1.59
2010/11	1.46	1.45	1.49	1.56	1.54	1.57	1.60	1.56	1.56	1.60	1.63	1.60	1.55	1.59	1.61
% change	14.4%	13.5%	7.4%	5.3%	5.5%	-0.7%	0.5%	0.6%	-0.3%	-1.5%	-2.3%	0.1%	3.3%	-0.5%	-1.2%

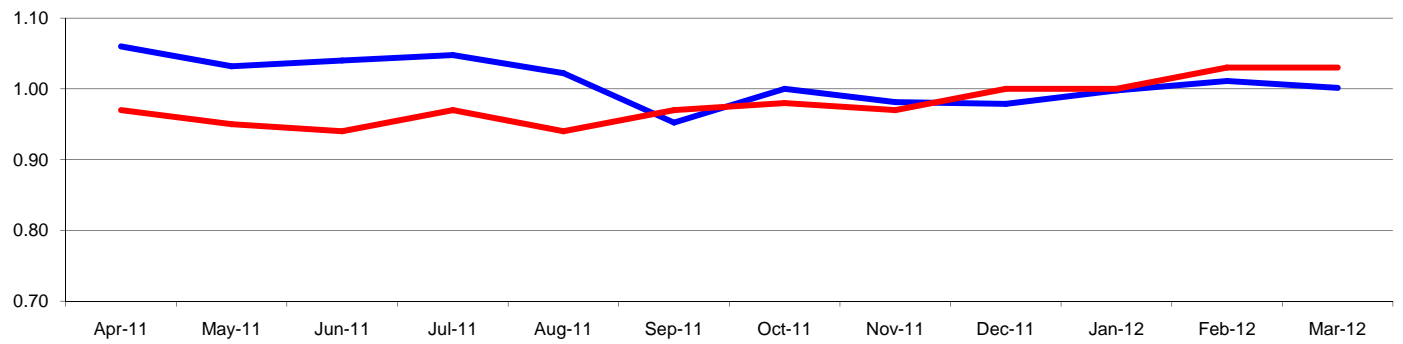
EURO TO AMERICAN DOLLAR



Source: Yahoo Finance

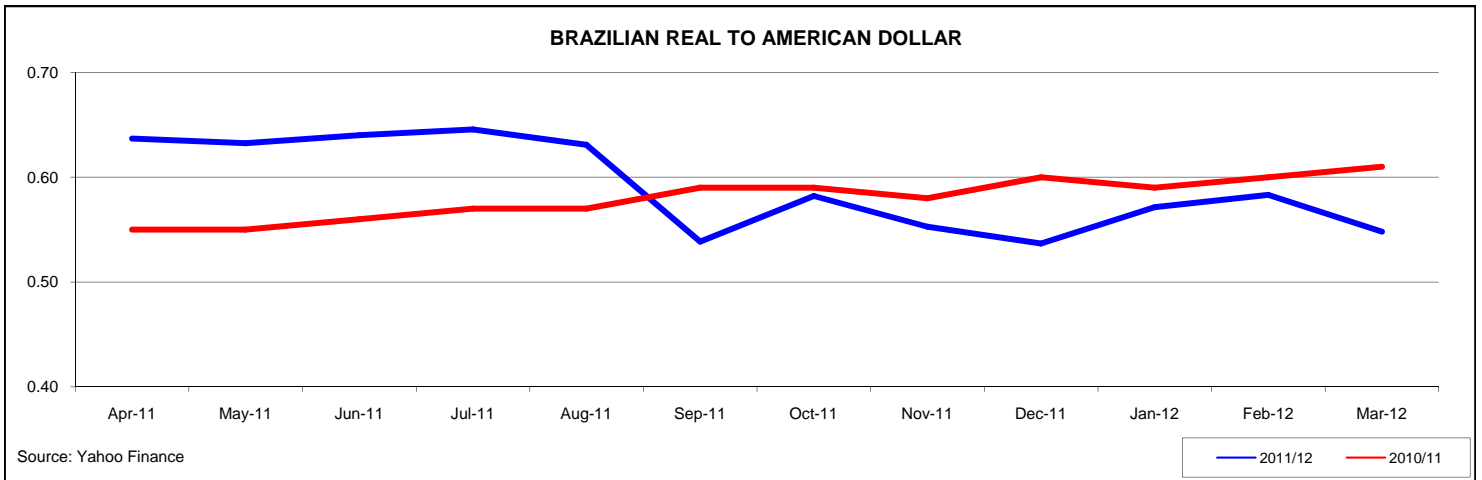
	Apr-11	May-11	Jun-11	Jul-11	Aug-11	Sep-11	Oct-11	Nov-11	Dec-11	Jan-12	Feb-12	Mar-12	Rolling 12 Months	Fiscal Year 2011/2012	Calendar YTD
2011/12	1.48	1.44	1.45	1.44	1.44	1.34	1.39	1.34	1.30	1.31	1.33	1.33	1.38	1.33	1.33
2010/11	1.21	1.23	1.22	1.30	1.27	1.36	1.39	1.30	1.34	1.37	1.38	1.42	1.32	1.37	1.39
% change	22.3%	17.0%	18.9%	10.7%	13.2%	-1.5%	-0.3%	3.4%	-3.3%	-4.5%	-3.4%	-6.1%	5.0%	-2.4%	-4.7%

CANADIAN DOLLAR TO AMERICAN DOLLAR



Source: Yahoo Finance

	Apr-11	May-11	Jun-11	Jul-11	Aug-11	Sep-11	Oct-11	Nov-11	Dec-11	Jan-12	Feb-12	Mar-12	Rolling 12 Months	Fiscal Year 2011/2012	Calendar YTD
2011/12	1.06	1.03	1.04	1.05	1.02	0.95	1.00	0.98	0.98	1.00	1.01	1.00	1.01	1.00	1.00
2010/11	0.97	0.95	0.94	0.97	0.94	0.97	0.98	0.97	1.00	1.00	1.03	1.03	0.98	1.00	1.02
% change	9.3%	8.6%	10.6%	8.0%	8.7%	-1.8%	2.1%	1.2%	-2.1%	-0.2%	-1.8%	-2.8%	3.2%	-0.7%	-1.6%



	Apr-11	May-11	Jun-11	Jul-11	Aug-11	Sep-11	Oct-11	Nov-11	Dec-11	Jan-12	Feb-12	Mar-12	Rolling 12 Months	Fiscal Year 2011/2012	Calendar YTD
2011/12	0.64	0.63	0.64	0.65	0.63	0.54	0.5821	0.55	0.54	0.57	0.58	0.55	0.59	0.56	0.57
2010/11	0.55	0.55	0.56	0.57	0.57	0.59	0.59	0.58	0.6	0.59	0.6	0.61	0.58	0.60	0.60
% change	15.8%	15.0%	14.3%	13.2%	10.7%	-8.7%	-1.3%	-4.7%	-10.6%	-3.2%	-2.8%	-10.2%	2.0%	-5.5%	-5.4%