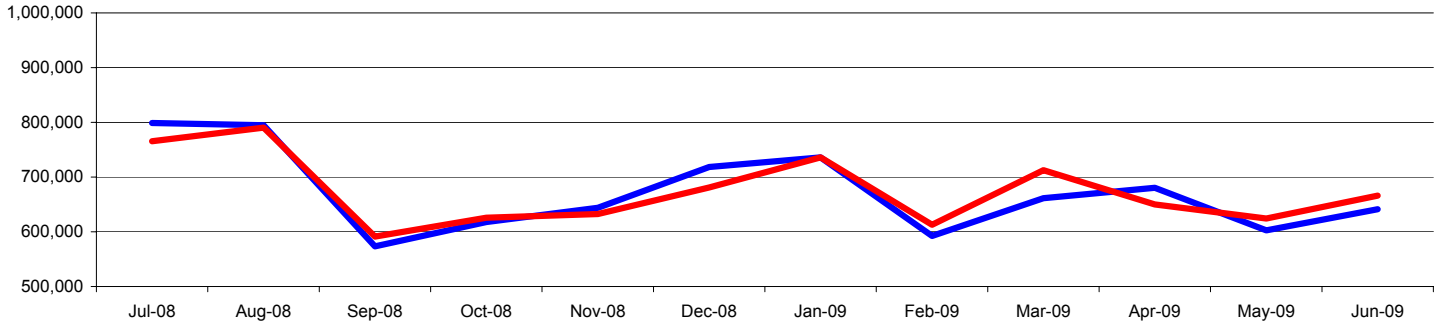


**GREATER MIAMI CONVENTION AND VISITORS BUREAU DASHBOARD OF KEY VISITOR INDUSTRY INDICATORS
(ROLLING TWELVE MONTHS)**

MIAMI AIRPORT INTERNATIONAL ARRIVALS

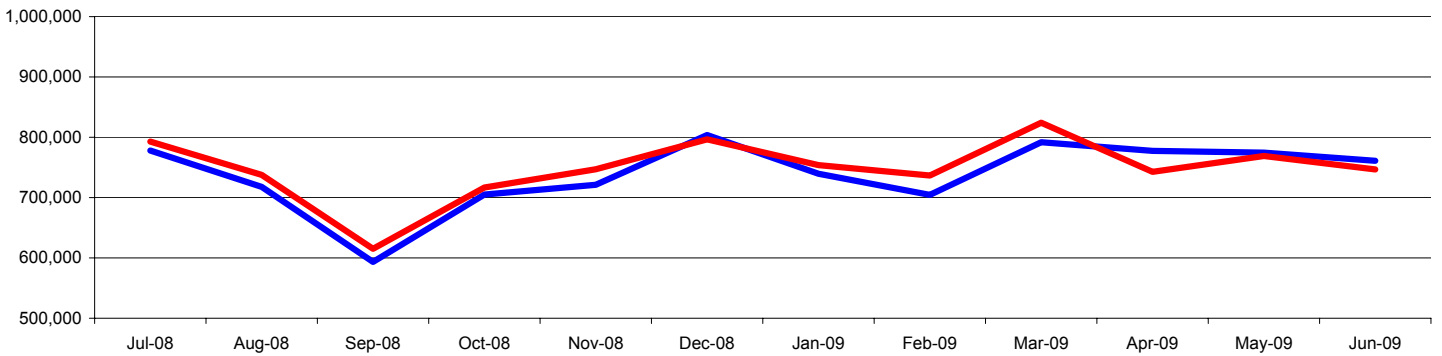


Source: Miami - Dade Aviation

— 2008/09 — 2007/08

	Jul-08	Aug-08	Sep-08	Oct-08	Nov-08	Dec-08	Jan-09	Feb-09	Mar-09	Apr-09	May-09	Jun-09	YTD
2008/09	798,873	794,686	573,506	617,735	643,916	718,414	735,982	592,380	661,523	680,311	602,566	641,254	8,061,146
2007/08	765,398	790,267	591,123	625,616	632,310	680,918	736,089	612,969	712,642	649,884	624,233	666,161	8,087,610
% Change	4.4%	0.6%	-3.0%	-1.3%	1.8%	5.5%	-0.01%	-3.4%	-7.2%	4.7%	-3.5%	-3.7%	-0.3%

MIAMI AIRPORT DOMESTIC ARRIVALS

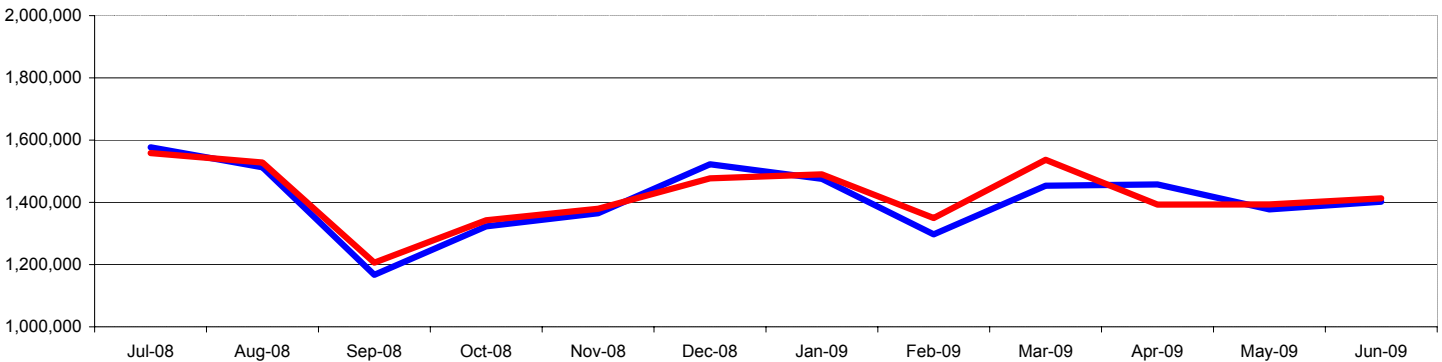


Source: Miami - Dade Aviation

— 2008/09 — 2007/08

	Jul-08	Aug-08	Sep-08	Oct-08	Nov-08	Dec-08	Jan-09	Feb-09	Mar-09	Apr-09	May-09	Jun-09	YTD
2008/09	778,097	717,892	593,358	705,077	721,115	803,804	739,510	704,536	791,775	777,350	774,600	761,026	8,868,140
2007/08	792,776	737,721	615,220	716,684	746,878	796,435	753,977	736,617	824,198	742,772	769,041	746,594	8,978,913
% Change	-1.9%	-2.7%	-3.6%	-1.6%	-3.4%	0.9%	-1.9%	-4.4%	-3.9%	4.7%	0.7%	1.9%	-1.2%

MIAMI AIRPORT TOTAL ARRIVALS



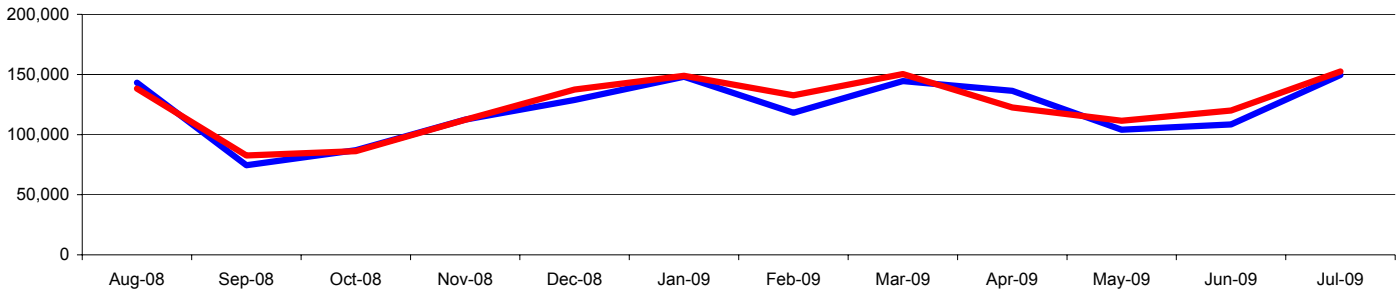
Source: Miami - Dade Aviation

— 2008/09 — 2007/08

	Jul-08	Aug-08	Sep-08	Oct-08	Nov-08	Dec-08	Jan-09	Feb-09	Mar-09	Apr-09	May-09	Jun-09	YTD
2008/09	1,576,970	1,512,578	1,166,864	1,322,812	1,365,031	1,522,218	1,475,492	1,296,916	1,453,298	1,457,661	1,377,166	1,402,280	14,149,840
2007/08	1,558,174	1,527,988	1,206,343	1,342,300	1,379,188	1,477,353	1,490,066	1,349,586	1,536,840	1,392,656	1,393,274	1,412,755	14,260,494
% Change	1.2%	-1.0%	-3.3%	-1.5%	-1.0%	3.0%	-1.0%	-3.9%	-5.4%	4.7%	-1.2%	-0.7%	-0.8%

**GREATER MIAMI CONVENTION AND VISITORS BUREAU DASHBOARD OF KEY VISITOR INDUSTRY INDICATORS
(ROLLING TWELVE MONTHS)**

FORT LAUDERDALE AIRPORT INTERNATIONAL ARRIVALS

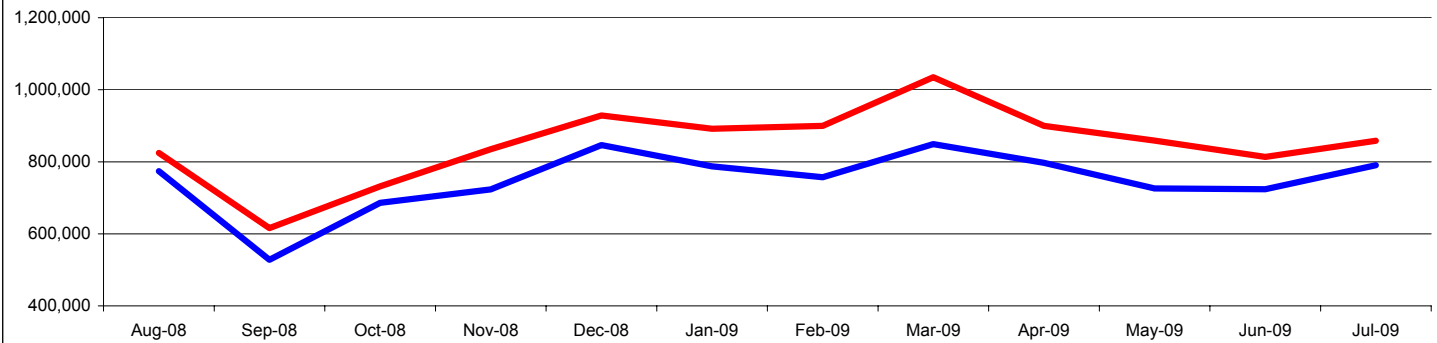


Source: Broward Aviation

— 2008/09 — 2007/08

	Aug-08	Sep-08	Oct-08	Nov-08	Dec-08	Jan-09	Feb-09	Mar-09	Apr-09	May-09	Jun-09	Jul-09	YTD
2008/09	143,189	74,542	87,077	112,389	128,827	148,066	118,106	144,514	136,355	104,075	108,480	149,569	1,455,189
2007/08	138,307	82,608	86,262	112,248	137,510	148,867	132,694	150,359	122,597	111,483	120,088	152,506	1,495,529
% Change	3.5%	-9.8%	0.9%	0.1%	-6.3%	-0.5%	-11.0%	-3.9%	11.2%	-6.6%	-9.7%	-1.9%	-2.7%

FORT LAUDERDALE AIRPORT DOMESTIC ARRIVALS

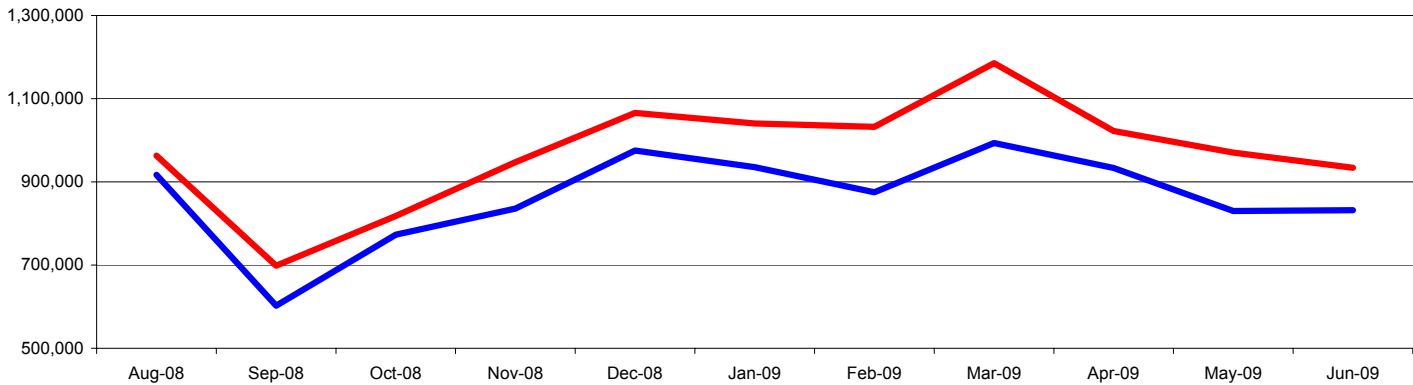


Source: Broward Aviation

— 2008/09 — 2007/08

	Aug-08	Sep-08	Oct-08	Nov-08	Dec-08	Jan-09	Feb-09	Mar-09	Apr-09	May-09	Jun-09	Jul-09	YTD
2008/09	773,914	527,851	685,953	723,255	846,437	787,129	757,028	849,071	797,264	725,945	723,605	790,428	8,987,880
2007/08	824,770	615,730	731,922	834,989	928,437	891,548	899,602	1,034,937	899,586	858,975	813,693	858,250	10,192,439
% Change	-6.2%	-14.3%	-6.3%	-13.4%	-8.8%	-11.7%	-15.8%	-18.0%	-11.4%	-15.5%	-11.1%	-7.9%	-11.8%

FORT LAUDERDALE AIRPORT TOTAL ARRIVALS



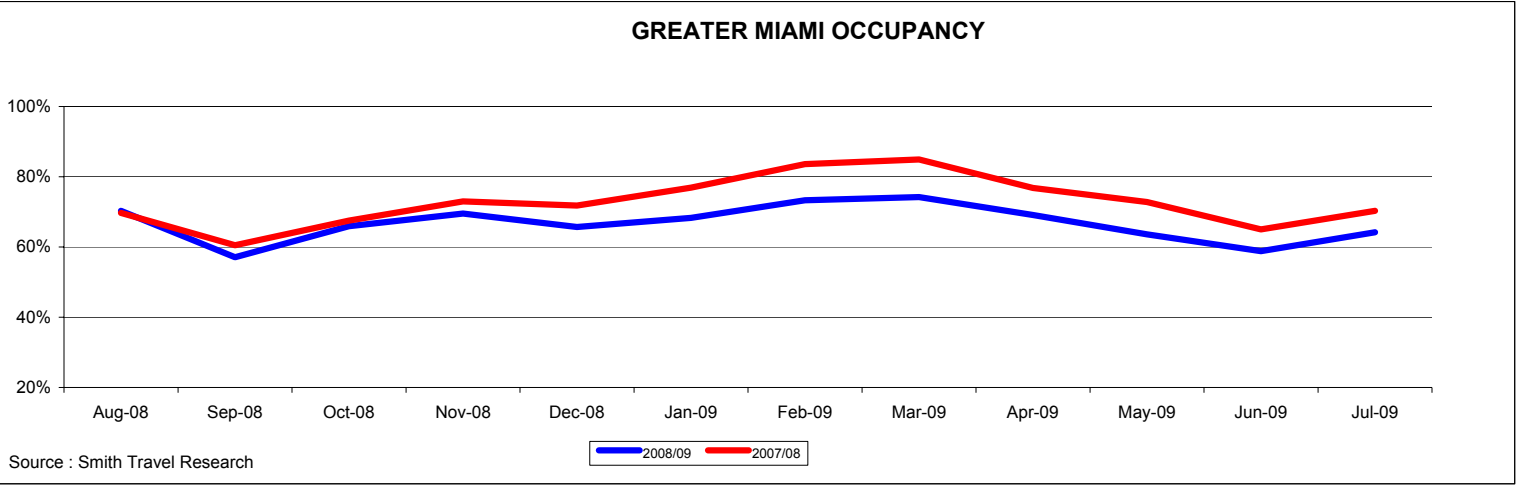
Source: Broward Aviation

— 2008/09 — 2007/08

	Aug-08	Sep-08	Oct-08	Nov-08	Dec-08	Jan-09	Feb-09	Mar-09	Apr-09	May-09	Jun-09	Jul-09	YTD
2008/09	917,103	602,393	773,030	835,644	975,264	935,195	875,134	993,585	933,619	830,020	832,085	939,997	7,840,967
2007/08	963,077	698,338	818,184	947,237	1,065,947	1,040,415	1,032,296	1,185,296	1,022,183	970,458	933,781	1,010,756	8,772,973
% Change	-4.8%	-13.7%	-5.5%	-11.8%	-8.5%	-10.1%	-15.2%	-16.2%	-8.7%	-14.5%	-10.9%	-7.0%	-10.6%

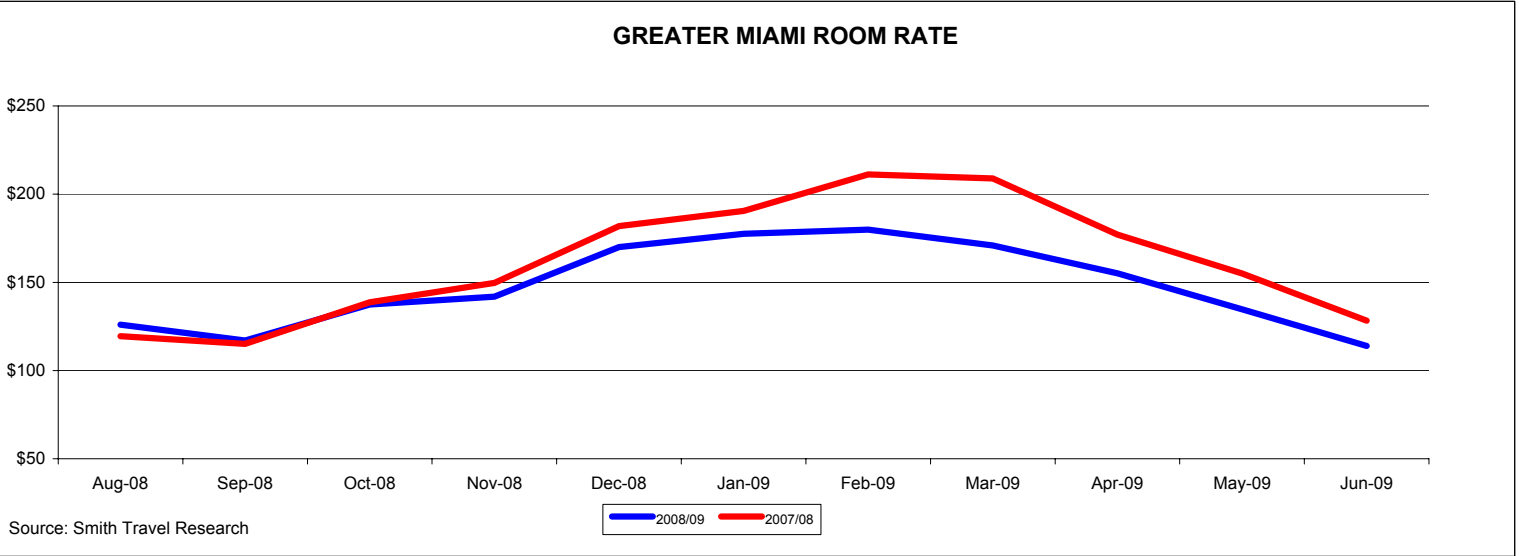
**GREATER MIAMI CONVENTION AND VISITORS BUREAU DASHBOARD OF KEY VISITOR INDUSTRY INDICATORS
(ROLLING TWELVE MONTHS)**

GREATER MIAMI OCCUPANCY



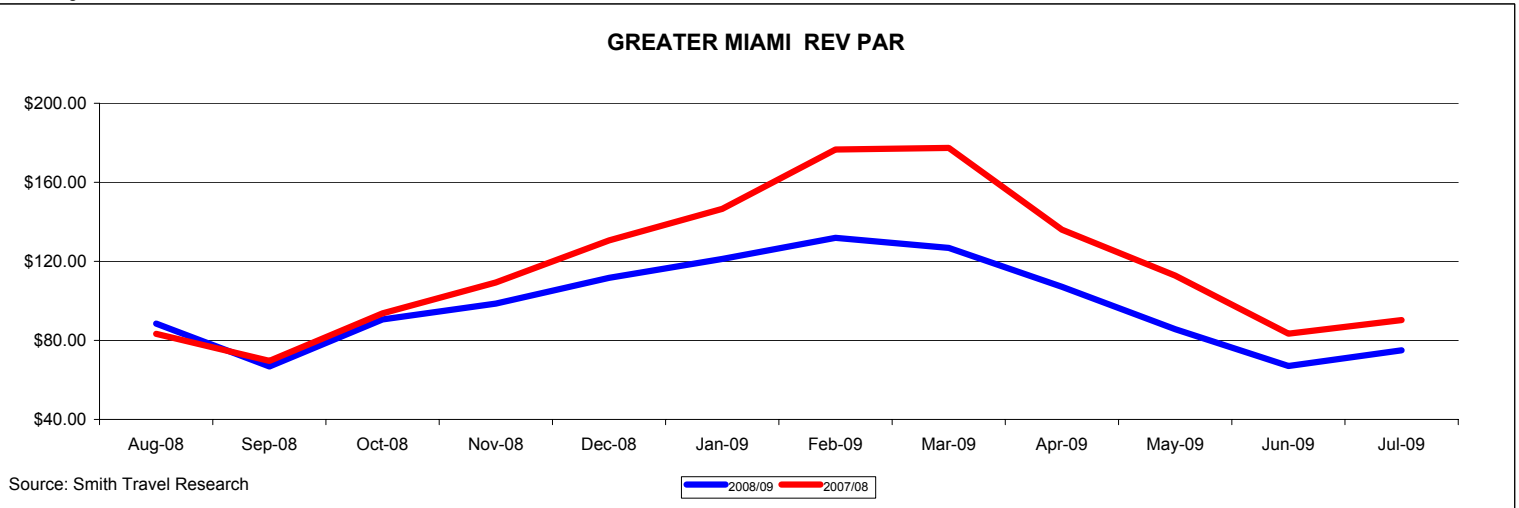
	Aug-08	Sep-08	Oct-08	Nov-08	Dec-08	Jan-09	Feb-09	Mar-09	Apr-09	May-09	Jun-09	Jul-09	Average
2008/09	70.3%	57.1%	65.9%	69.5%	65.7%	68.3%	73.3%	74.2%	69.1%	63.6%	58.8%	64.2%	67.2%
2007/08	69.7%	60.5%	67.5%	73.0%	71.8%	76.9%	83.6%	84.9%	76.8%	72.8%	65.0%	70.3%	72.7%
% Change	0.9%	-5.6%	-2.4%	-4.8%	-8.5%	-11.2%	-12.3%	-12.6%	-10.0%	-12.6%	-9.5%	-8.7%	-7.6%

GREATER MIAMI ROOM RATE



	Aug-08	Sep-08	Oct-08	Nov-08	Dec-08	Jan-09	Feb-09	Mar-09	Apr-09	May-09	Jun-09	Jul-09	Average
2008/09	\$125.97	\$117.00	\$137.43	\$141.87	\$169.98	\$177.50	\$179.85	\$170.93	\$155.11	\$134.73	\$113.94	\$116.80	\$146.98
2007/08	\$119.49	\$115.12	\$138.68	\$149.71	\$181.90	\$190.47	\$211.16	\$208.95	\$177.04	\$155.01	\$128.31	\$128.34	\$160.67
% Change	5.4%	1.6%	-0.9%	-5.2%	-6.6%	-6.8%	-14.8%	-18.2%	-12.4%	-13.1%	-11.2%	-9.0%	-8.5%

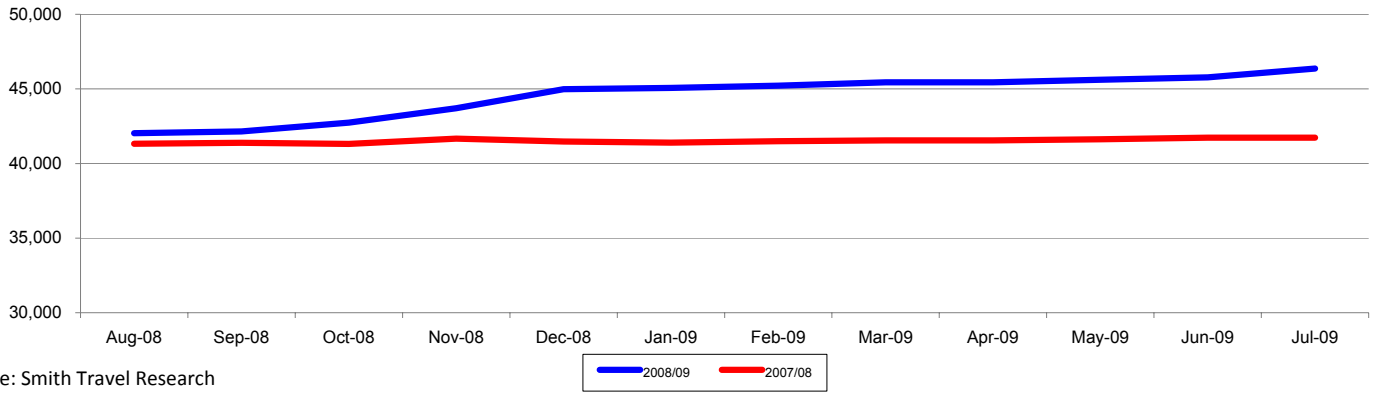
GREATER MIAMI REV PAR



	Aug-08	Sep-08	Oct-08	Nov-08	Dec-08	Jan-09	Feb-09	Mar-09	Apr-09	May-09	Jun-09	Jul-09	Average
2008/09	\$88.52	\$66.78	\$90.62	\$98.60	\$111.69	\$121.20	\$131.91	\$126.80	\$107.16	\$85.69	\$67.03	\$74.98	\$97.58
2007/08	\$83.29	\$69.67	\$93.66	\$109.28	\$130.58	\$146.54	\$176.56	\$177.38	\$136.01	\$112.78	\$83.42	\$90.29	\$117.46
% Change	6.3%	-4.1%	-3.2%	-9.8%	-14.5%	-17.3%	-25.3%	-28.5%	-21.2%	-24.0%	-19.6%	-17.0%	-16.9%

**GREATER MIAMI CONVENTION AND VISITORS BUREAU DASHBOARD OF KEY VISITOR INDUSTRY INDICATORS
(ROLLING TWELVE MONTHS)**

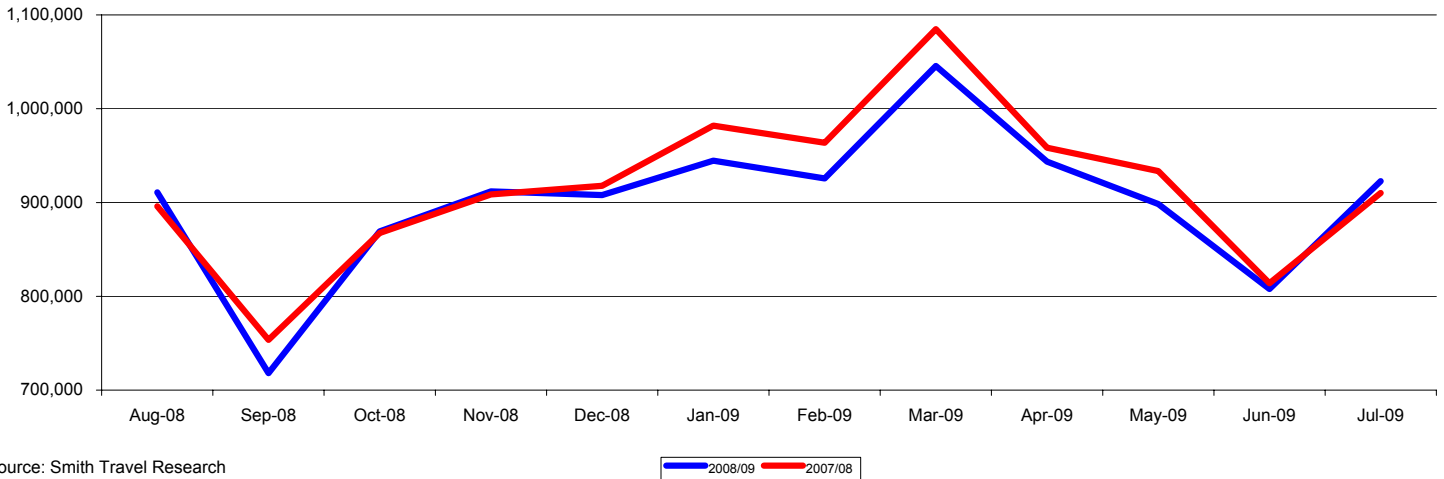
GREATER MIAMI LODGING ROOM INVENTORY



Source: Smith Travel Research

	Aug-08	Sep-08	Oct-08	Nov-08	Dec-08	Jan-09	Feb-09	Mar-09	Apr-09	May-09	Jun-09	Jul-09	Average
2008/09	42,027	42,151	42,740	43,709	44,976	45,063	45,215	45,445	45,445	45,615	45,776	46,365	44,544
2007/08	41,324	41,384	41,314	41,670	41,479	41,400	41,500	41,550	41,550	41,625	41,733	41,733	41,463
% change	1.7%	1.9%	3.5%	4.9%	8.4%	8.8%	9.0%	9.4%	9.4%	9.6%	9.7%	11.1%	7.4%

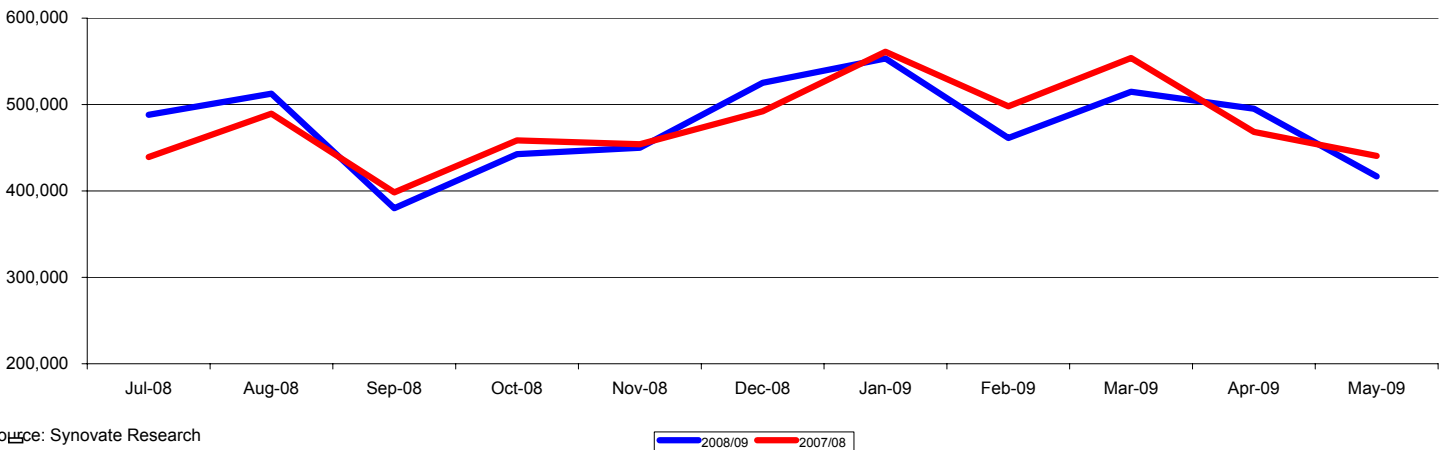
GREATER MIAMI HOTEL ROOMS SOLD



Source: Smith Travel Research

	Aug-08	Sep-08	Oct-08	Nov-08	Dec-08	Jan-09	Feb-09	Mar-09	Apr-09	May-09	Jun-09	Jul-09	Average
2008/09	910,806	718,106	869,252	911,823	907,892	944,592	925,744	1,045,557	943,538	898,297	807,865	922,707	900,515
2007/08	895,980	753,493	867,551	908,665	917,771	981,985	963,625	1,084,892	958,371	933,583	813,914	910,090	925,815
% change	1.7%	-4.7%	0.2%	0.3%	-1.1%	-3.8%	-3.9%	-3.6%	-1.5%	-3.8%	-0.7%	1.4%	-2.7%

GREATER MIAMI INTERNATIONAL VISITORS

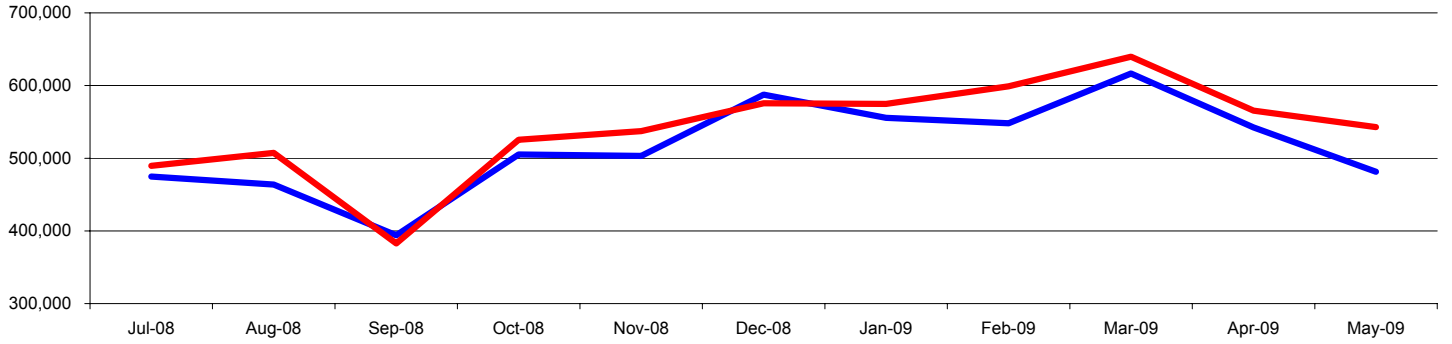


Source: Synovate Research

	Jul-08	Aug-08	Sep-08	Oct-08	Nov-08	Dec-08	Jan-09	Feb-09	Mar-09	Apr-09	May-09	Jun-09	YTD
2008/09	488,200	512,600	380,000	442,600	450,000	525,200	553,300	461,300	514,800	495,099	416,800	441,800	5,681,699
2007/08	439,300	489,500	398,400	458,500	454,000	492,300	561,100	497,900	553,800	468,400	440,500	466,900	5,720,600
% change	11.1%	4.7%	-4.6%	-3.5%	-0.9%	6.7%	-1.4%	-7.4%	-7.0%	5.7%	-5.4%	-5.4%	-0.7%

**GREATER MIAMI CONVENTION AND VISITORS BUREAU DASHBOARD OF KEY VISITOR INDUSTRY INDICATORS
(ROLLING TWELVE MONTHS)**

GREATER MIAMI DOMESTIC VISITORS

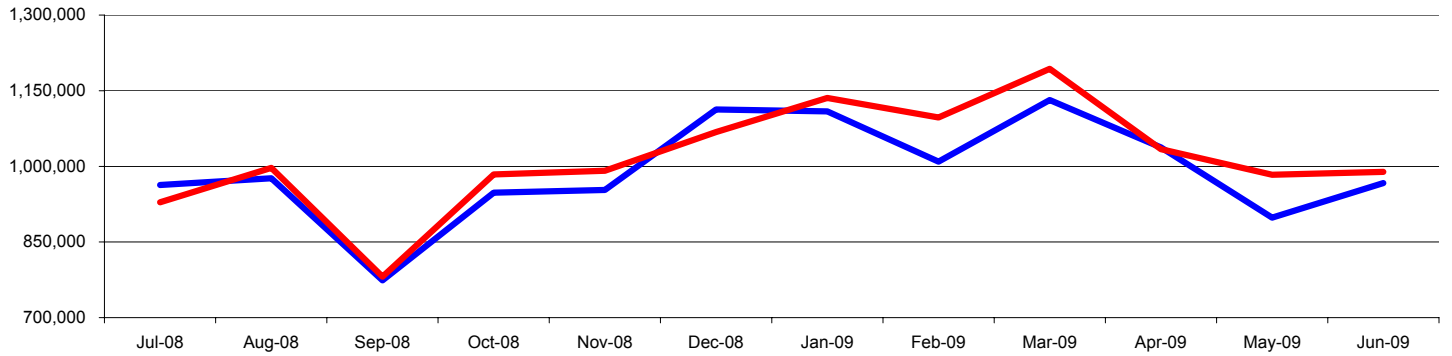


Source: Synovate Research

— 2008/09 — 2007/08

	Jul-08	Aug-08	Sep-08	Oct-08	Nov-08	Dec-08	Jan-09	Feb-09	Mar-09	Apr-09	May-09	Jun-09	YTD
2008/09	474,800	463,800	394,000	505,100	503,300	587,600	555,600	548,200	616,600	542,410	481,464	525,000	6,197,874
2007/08	489,500	507,400	382,800	525,400	537,300	575,700	574,700	598,900	639,700	565,600	542,800	522,200	6,462,000
% change	-3.0%	-8.6%	2.9%	-3.9%	-6.3%	2.1%	-3.3%	-8.5%	-3.6%	-4.1%	-11.3%	0.5%	-4.1%

GREATER MIAMI TOTAL VISITORS

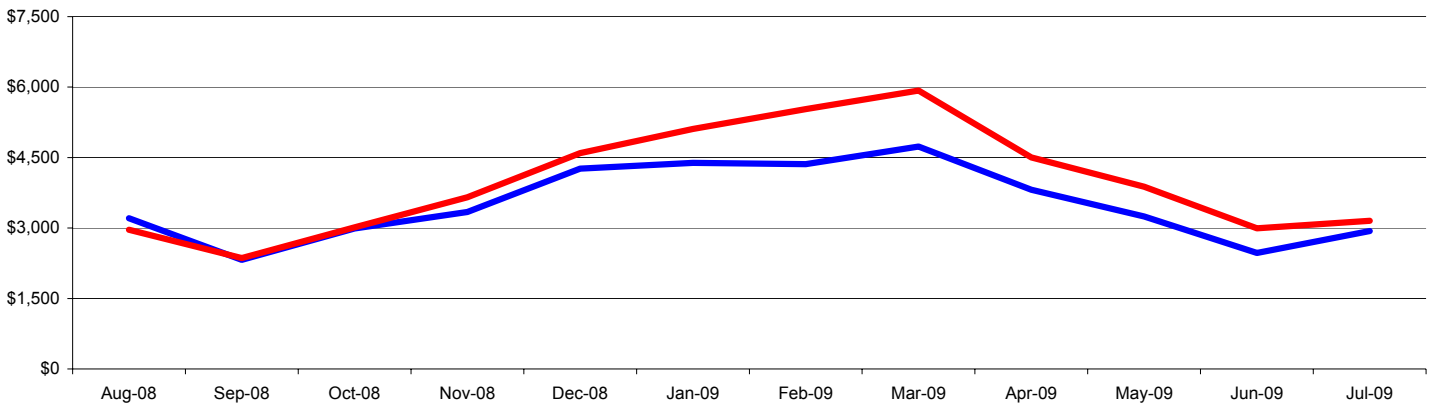


Source: Synovate Research

— 2008/09 — 2007/08

	Jul-08	Aug-08	Sep-08	Oct-08	Nov-08	Dec-08	Jan-09	Feb-09	Mar-09	Apr-09	May-09	Jun-09	YTD
2008/09	963,000	976,400	774,000	947,700	953,300	1,112,800	1,108,900	1,009,500	1,131,400	1,037,509	898,264	966,800	10,912,773
2007/08	928,800	996,900	781,200	983,900	991,300	1,068,000	1,135,800	1,096,800	1,193,500	1,034,000	983,300	989,100	11,193,500
% change	3.7%	-2.1%	-0.9%	-3.7%	-3.8%	4.2%	-2.4%	-8.0%	-5.2%	0.3%	-8.6%	-2.3%	-2.5%

MIAMI - DADE COUNTY CONVENTION DEVELOPMENT TAX (000)



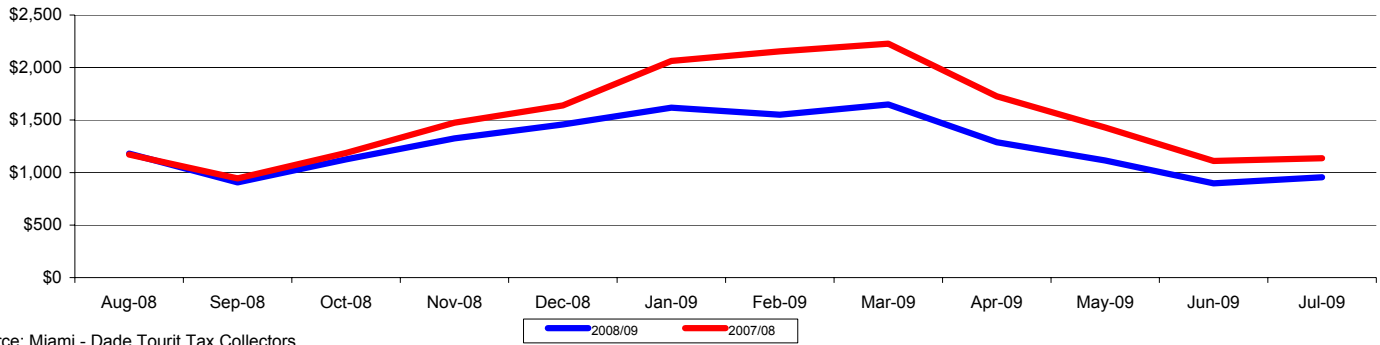
Source: Miami - Dade Tourist Tax Collectors

— 2008/09 — 2007/08

	Aug-08	Sep-08	Oct-08	Nov-08	Dec-08	Jan-09	Feb-09	Mar-09	Apr-09	May-09	Jun-09	Jul-09	YTD
2008/09	\$3,209	\$2,323	\$2,992	\$3,341	\$4,265	\$4,386	\$4,360	\$4,735	\$3,814	\$3,247	\$2,470	\$2,936	\$42,078
2007/08	\$2,964	\$2,360	\$3,013	\$3,653	\$4,593	\$5,109	\$5,531	\$5,925	\$4,504	\$3,879	\$2,995	\$3,153	\$47,680
% Change	8.3%	-1.6%	-0.7%	-8.6%	-7.1%	-14.2%	-21.2%	-20.1%	-15.3%	-16.3%	-17.5%	-6.9%	-11.7%

**GREATER MIAMI CONVENTION AND VISITORS BUREAU DASHBOARD OF KEY VISITOR INDUSTRY INDICATORS
(ROLLING TWELVE MONTHS)**

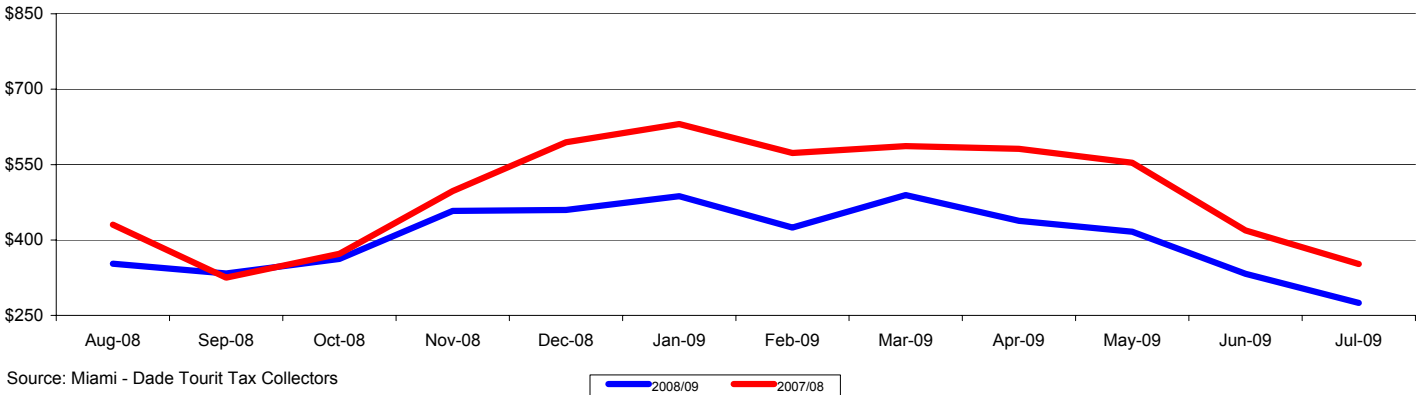
MIAMI - DADE RESORT TAX (000)



Source: Miami - Dade Tourist Tax Collectors

	Aug-08	Sep-08	Oct-08	Nov-08	Dec-08	Jan-09	Feb-09	Mar-09	Apr-09	May-09	Jun-09	Jul-09	YTD
2008/09	\$1,180.2	\$906.9	\$1,126.5	\$1,325.4	\$1,457.6	\$1,618.0	\$1,550.8	\$1,648.4	\$1,289.0	\$1,114.8	\$897.0	\$955.7	\$15,070.3
2007/08	\$1,171.9	\$944.5	\$1,186.3	\$1,474.5	\$1,638.5	\$2,062.5	\$2,154.3	\$2,227.6	\$1,726.0	\$1,429.2	\$1,111.0	\$1,136.9	\$18,263.2
% Change	0.7%	-4.0%	-5.0%	-10.1%	-11.0%	-21.6%	-28.0%	-26.0%	-25.3%	-22.0%	-19.3%	-15.9%	-17.5%

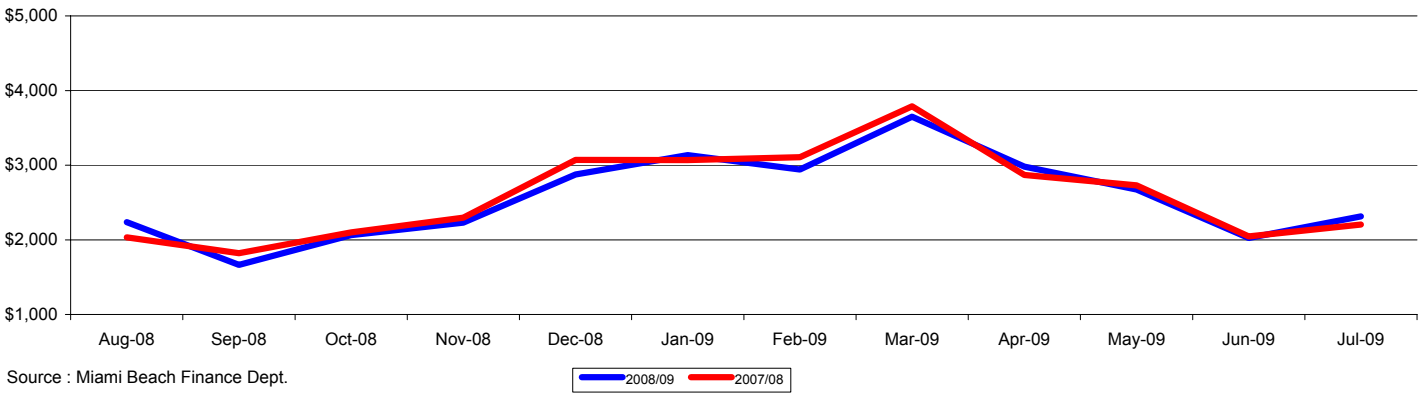
MIAMI - DADE 2% FOOD & BEVERAGE TAX (000)



Source: Miami - Dade Tourist Tax Collectors

	Aug-08	Sep-08	Oct-08	Nov-08	Dec-08	Jan-09	Feb-09	Mar-09	Apr-09	May-09	Jun-09	Jul-09	YTD
2008/09	\$352.8	\$333.3	\$362.5	\$457.9	\$459.8	\$487.0	\$424.6	\$489.3	\$438.0	\$416.6	\$332.8	\$274.9	\$4,829.5
2007/08	\$430.5	\$325.1	\$372.5	\$497.4	\$594.3	\$630.7	\$573.0	\$586.7	\$581.2	\$553.7	\$418.9	\$352.3	\$5,916.3
% Change	-18.0%	2.5%	-2.7%	-7.9%	-22.6%	-22.8%	-25.9%	-16.6%	-24.6%	-24.8%	-20.6%	-22.0%	-18.4%

**MIAMI BEACH RESORT TAX (000)
includes F&B Tax**

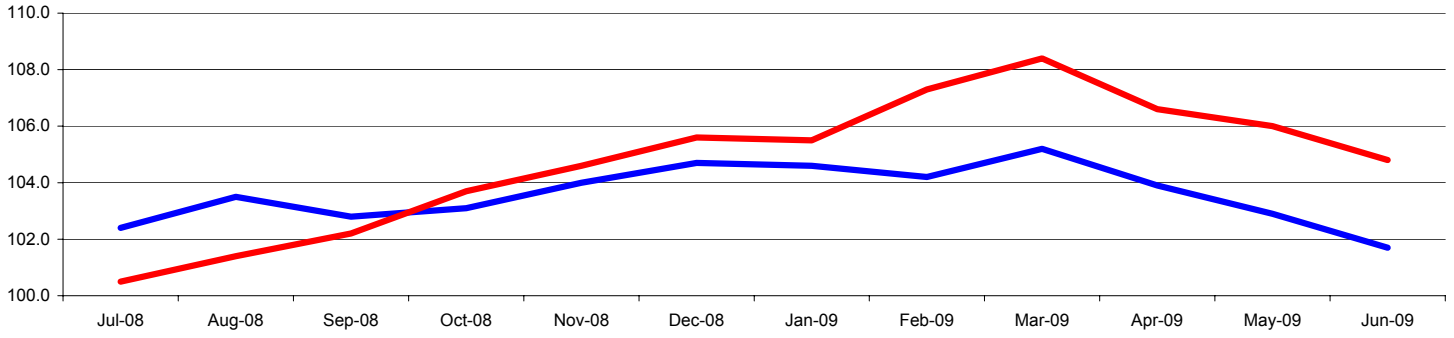


Source: Miami Beach Finance Dept.

	Aug-08	Sep-08	Oct-08	Nov-08	Dec-08	Jan-09	Feb-09	Mar-09	Apr-09	May-09	Jun-09	Jul-09	YTD
2008/09	\$2,237.6	\$1,664.0	\$2,062.7	\$2,230.3	\$2,874.9	\$3,136.1	\$2,941.2	\$3,650.2	\$2,980.7	\$2,673.6	\$2,025.3	\$2,314.0	\$30,790.6
2007/08	\$2,033.3	\$1,821.4	\$2,100.3	\$2,296.2	\$3,071.1	\$3,068.0	\$3,106.7	\$3,789.9	\$2,869.5	\$2,729.3	\$2,045.5	\$2,203.7	\$31,134.9
% Change	10.0%	-8.6%	-1.8%	-2.9%	-6.4%	2.2%	-5.3%	-3.7%	3.9%	-2.0%	-1.0%	5.0%	-1.1%

**GREATER MIAMI CONVENTION AND VISITORS BUREAU DASHBOARD OF KEY VISITOR INDUSTRY INDICATORS
(ROLLING TWELVE MONTHS)**

MIAMI - DADE LEISURE & HOSPITALITY EMPLOYMENT (000)

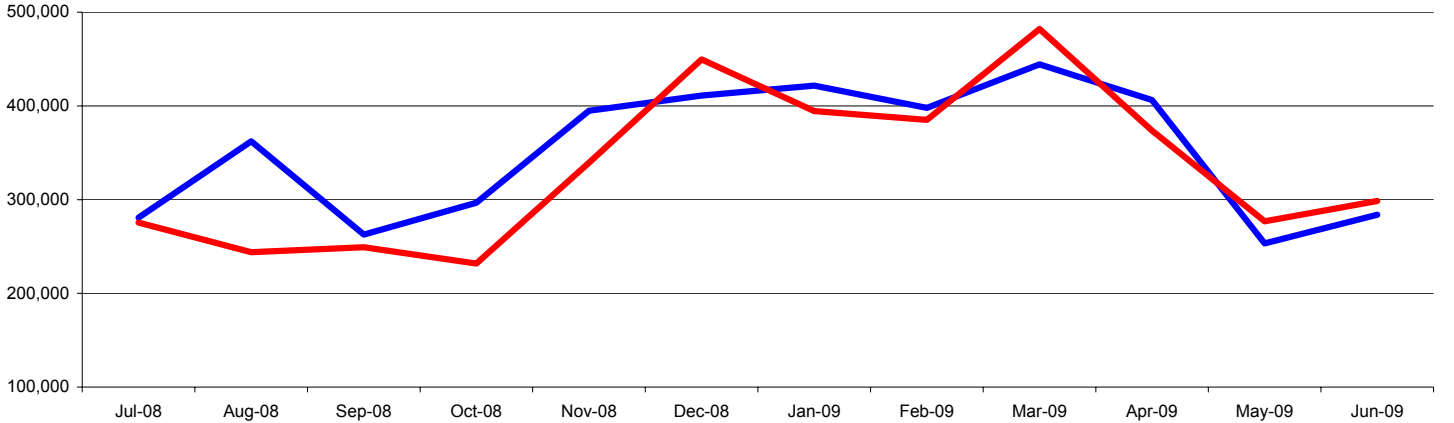


Source: Florida Dept of Labor

Legend: 2008/09 (Blue line), 2007/08 (Red line)

	Jul-08	Aug-08	Sep-08	Oct-08	Nov-08	Dec-08	Jan-09	Feb-09	Mar-09	Apr-09	May-09	Jun-09	Average
2008/ 09	102.4	103.5	102.8	103.1	104.0	104.7	104.6	104.2	105.2	103.9	102.9	101.7	103.6
2007/ 08	100.5	101.4	102.2	103.7	104.6	105.6	105.5	107.3	108.4	106.6	106.0	104.8	104.7
% Change	1.9%	2.1%	0.6%	-0.6%	-0.6%	-0.9%	-0.9%	-2.9%	-3.0%	-2.5%	-2.9%	-3.0%	-1.1%

PORT OF MIAMI PASSENGERS

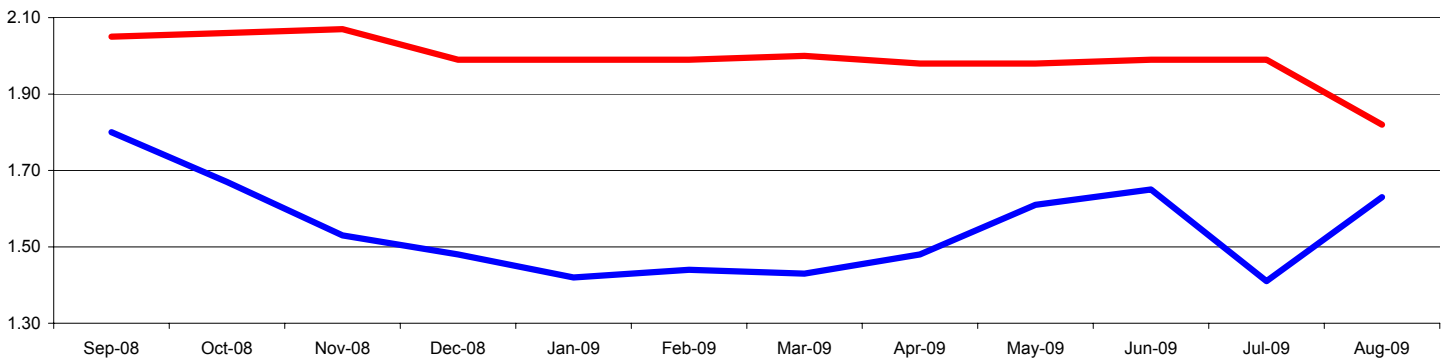


Source: Port of Miami

Legend: 2008/09 (Blue line), 2007/08 (Red line)

	Jul-08	Aug-08	Sep-08	Oct-08	Nov-08	Dec-08	Jan-09	Feb-09	Mar-09	Apr-09	May-09	Jun-09	YTD
2008/09	280,726	362,189	262,662	296,604	394,861	410,982	421,629	397,848	444,288	406,255	253,368	283,911	4,215,323
2007/08	275,538	243,887	249,266	231,845	339,361	449,675	394,467	385,113	482,143	373,712	276,914	298,474	4,000,395
% Change	1.9%	48.5%	5.4%	27.9%	16.4%	-8.6%	6.9%	3.3%	-7.9%	8.7%	-8.5%	-4.9%	5.4%

BRITISH POUND TO AMERICAN DOLLAR



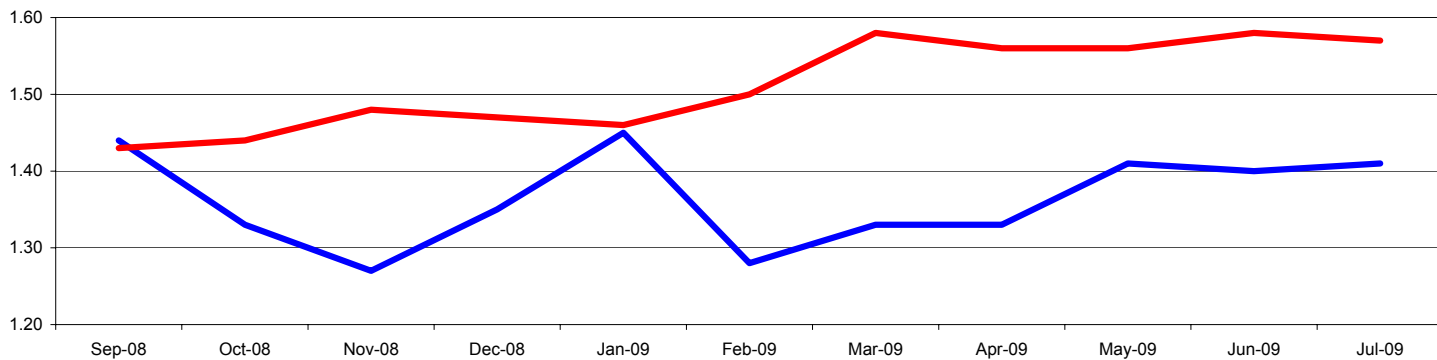
Source: Yahoo Finance

Legend: 2008/09 (Blue line), 2007/08 (Red line)

	Sep-08	Oct-08	Nov-08	Dec-08	Jan-09	Feb-09	Mar-09	Apr-09	May-09	Jun-09	Jul-09	Aug-09	Average
2008/09	1.80	1.67	1.53	1.48	1.42	1.44	1.43	1.48	1.61	1.65	1.41	1.63	1.55
2007/08	2.05	2.06	2.07	1.99	1.99	1.99	2.00	1.98	1.98	1.99	1.99	1.82	1.99
% change	-12.2%	-18.9%	-26.1%	-25.6%	-28.6%	-27.6%	-28.5%	-25.3%	-18.7%	-17.1%	-29.1%	-10.4%	-22.4%

**GREATER MIAMI CONVENTION AND VISITORS BUREAU DASHBOARD OF KEY VISITOR INDUSTRY INDICATORS
(ROLLING TWELVE MONTHS)**

EURO TO AMERICAN DOLLAR

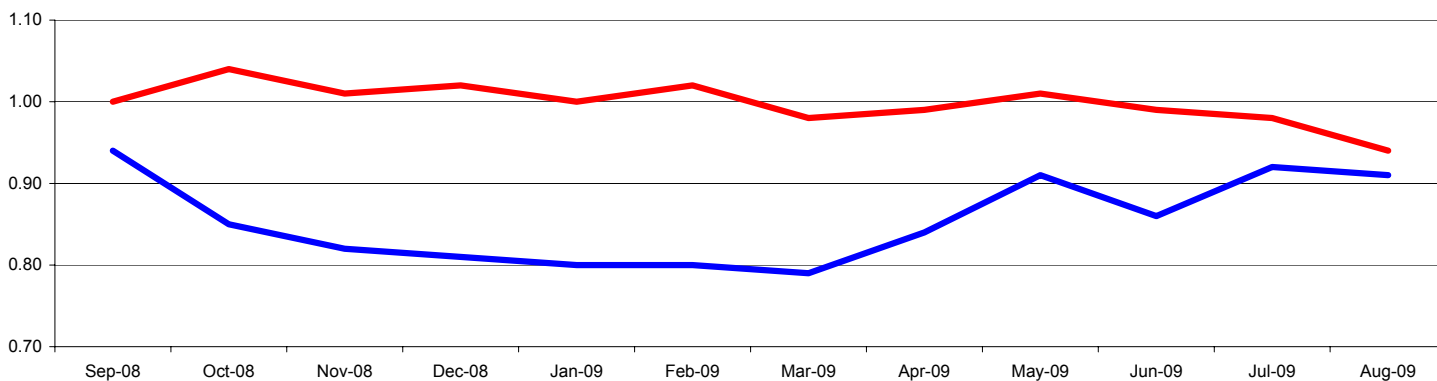


Source: Yahoo Finance

— 2008/09 — 2007/08

	Sep-08	Oct-08	Nov-08	Dec-08	Jan-09	Feb-09	Mar-09	Apr-09	May-09	Jun-09	Jul-09	Aug-09	Average
2008/09	1.44	1.33	1.27	1.35	1.45	1.28	1.33	1.33	1.41	1.40	1.41	1.43	1.37
2007/08	1.43	1.44	1.48	1.47	1.46	1.50	1.58	1.56	1.56	1.58	1.57	1.47	1.51
% change	0.7%	-7.6%	-14.2%	-8.2%	-0.7%	-14.7%	-15.8%	-14.7%	-9.6%	-11.4%	-10.2%	-2.7%	-9.2%

CANADIAN DOLLAR TO AMERICAN DOLLAR

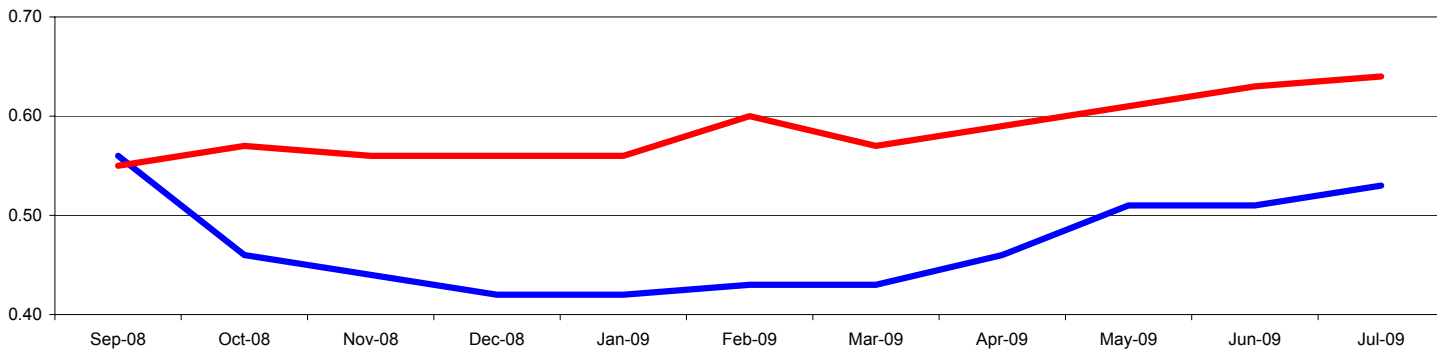


Source: Yahoo Finance

— 2008/09 — 2007/08

	Sep-08	Oct-08	Nov-08	Dec-08	Jan-09	Feb-09	Mar-09	Apr-09	May-09	Jun-09	Jul-09	Aug-09	Average
2008/09	0.94	0.85	0.82	0.81	0.80	0.80	0.79	0.84	0.91	0.86	0.92	0.91	0.85
2007/08	1.00	1.04	1.01	1.02	1.00	1.02	0.98	0.99	1.01	0.99	0.98	0.94	1.01
% change	-6.0%	-18.3%	-18.8%	-20.6%	-20.0%	-21.6%	-19.4%	-15.2%	-9.9%	-13.1%	-6.1%	-3.2%	-0.16

BRAZILIAN REAL TO AMERICAN DOLLAR



Source: Yahoo Finance

— 2008/09 — 2007/08

	Sep-08	Oct-08	Nov-08	Dec-08	Jan-09	Feb-09	Mar-09	Apr-09	May-09	Jun-09	Jul-09	Aug-09	Average
2008/09	0.56	0.46	0.44	0.42	0.42	0.43	0.43	0.46	0.51	0.51	0.53	0.53	0.48
2007/08	0.55	0.57	0.56	0.56	0.56	0.60	0.57	0.59	0.61	0.63	0.64	0.61	0.59
% change	1.8%	-19.3%	-21.4%	-25.0%	-25.0%	-28.3%	-24.6%	-22.0%	-16.4%	-19.0%	-17.2%	-13.1%	-19.1%