



## FOUR SEASONS HOTEL

### *Miami*

Just a block from glittering Biscayne Bay, Four Seasons presents a sophisticated urban oasis—within easy reach of the very best of Miami. A sleek tower of luxurious guest rooms and suites with sweeping vistas of the city and bay.

#### Four Seasons Hotel Miami

1435 Brickell Avenue  
Miami, FL 33131

Telephone: .....305/358-3535  
Florida Toll-Free: .....800/332-3442  
Fax: .....305/381-3100  
Web: .....www.fourseasons.com/miami

#### Guest Room Information

Number of rooms: .....221  
Number of suites: .....39  
Number of floors: .....10  
Check-in time: .....3 p.m.  
Check-out time: .....12 noon

#### Meeting/Banquet Facilities

Can host a spectrum of events, from small board meetings or social gatherings to large conferences, galas and weddings. Most rooms have full walls of windows, offering plentiful natural light. The 5,830-square-foot Grand Ballroom can be divided in half for flexibility.

Number of meeting rooms: .....10  
Total square footage: .....14,210

**Meeting equipment:** Audio/visual equipment, chairs, tables, lecterns, flip charts, portable staging, black-out curtains, lighting and staging capabilities, tele-conferencing, high-speed Internet access.

**Meeting support services:** Spotlight technicians, electricians, transportation desk, business center, in-house audio/visual service, security guards, concierge.

#### Dining and Entertainment

**Acqua**—Located off the main lobby on the seventh floor, Acqua features floor-to-ceiling windows overlooking the pool terrace. An extensive wine display is the focal point of the restaurant. Open for breakfast, lunch and dinner, Acqua serves the finest Italian food complemented by warm, impeccable service and attention to detail. Seats 100 indoors and 60 on the outdoor terrace.

**Bahía**—Serves beverages and light snacks throughout the 2-acre pool terrace. In the evening, Bahía turns into a lively outdoor bar. There is live music Wednesday–Saturday 8–11 p.m. Seats 80.

**14-Thirty-Five**—A favorite gathering place featuring live jazz music Mondays and Tuesdays, along with a menu of light snacks. Located off the Hotel lobby. Seats 60.

#### Guest Room Amenities

TV with remote control, cable movie channels, in-room pay-per-view movies, voice mail, telephone with message light, computer hookup, video messages, individual climate control, electronic door locks, full bath amenities, turndown, iron/ironing board, alarm clock, hair dryer, coffee maker, high-speed Internet access.

#### Guest Services

Business center, concierge, gift shop, laundry service, dry cleaning, room service, valet parking, valet service, multilingual staff, ATM, in-room safe, bell service, complimentary newspaper, currency exchange, roll-in showers, beauty salon/barbershop.

#### Recreational Facilities

The two-acre pool terrace contains three separate swimming pools. The Main Pool includes a large whirlpool. Pool attendants offer water spritzes and moist towels.

Splash Spa is a 50,000-square-foot facility featuring a total of 10 treatment rooms, including a dry redwood sauna, a Turkish steam room and a wet treatment area with a Vichy shower. Offers an extensive menu of signature treatments, massages, facials, body treatments and waxing.

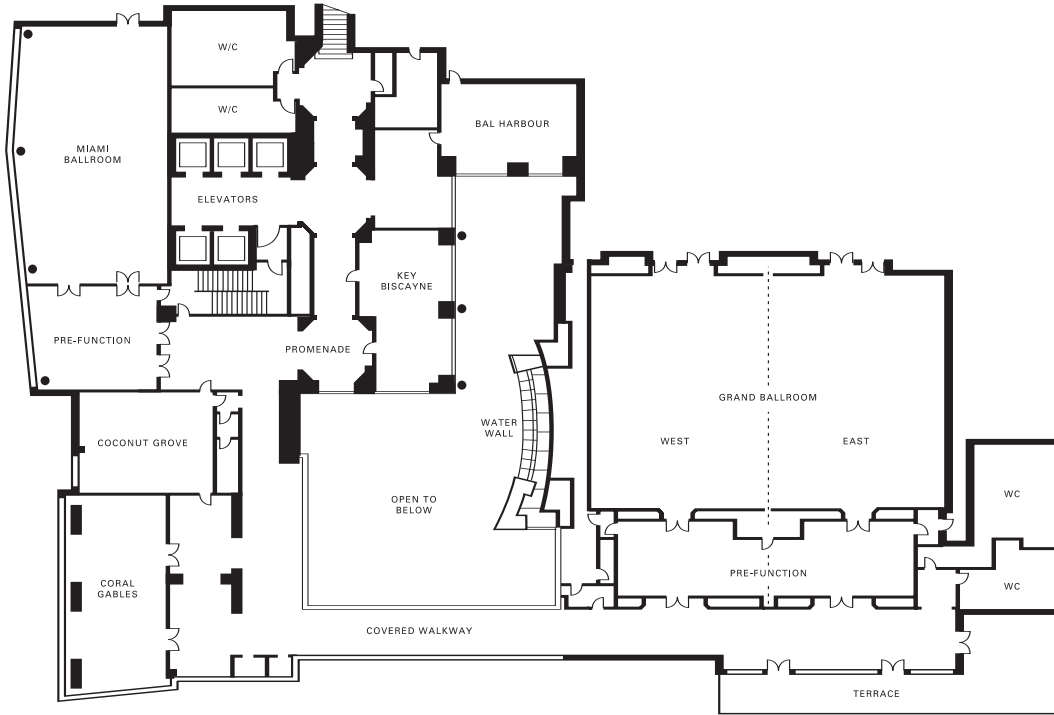
The Splash gift shop offers a variety of products, and a full-service beauty salon. After your treatment, relax at Elixir tea and coffee bar, overlooking the 80-foot waterfall. Treatments are also available in the pool cabanas or in your room.

#### General Information

**Credit Cards Accepted:** American Express, Diners Club, Discover, MasterCard, Visa.

**Reservations:** Guaranteed reservation assures you a room even if you check in late (after 6 p.m.). All reservations made through the website must be guaranteed with a major credit card. Certain arrival dates and rates may require a deposit.

**Parking:** Self parking, valet parking



Room	Dimensions (ft.)	Size		Ht. (ft.)	CAPACITIES						
		(sq. ft.)	(m <sup>2</sup> )		Reception	Banquet	Theater	Boardroom	Classroom	Hollow Square	U- Shape
Grand Ballroom*	62 x 94	5,830	542	19	525	480	600	-	408	114	96
Pre-function*	20 x 79	1,580	147	12	150	-	-	-	-	-	-
Miami Ballroom	37 x 68	2,500	232	12	250	192	208	-	144	66	60
Pre-function	26 x 31	800	74	10.5	70	-	-	-	-	-	-
Bal Harbour	20 x 35	700	65	10.5	60	40	56	28	24	30	27
Key Biscayne	20 x 40	800	74	10.5	65	50	72	28	32	36	30
Coconut Grove	26 x 35	900	84	10.5	80	60	80	28	45	36	30
Coral Gables	23 x 48	1,100	102	12	85	60	66	34	48	36	33

\*divisible in halves

1 ft. = 0.3048 m 1 sq. ft. = 0.0929 m<sup>2</sup>