



The city's only AAA Five Diamond hotel and restaurant is ideally located on Brickell Key, a 44-acre island in Biscayne Bay. The deluxe 327-room waterfront city resort boasts an award-winning restaurant and spa along with an elegant Lobby lounge and M-Bar, a martini and champagne bar and private beach overlooking Biscayne Bay.

**Mandarin Oriental, Miami**  
500 Brickell Key Drive  
Miami, FL 33131

**Telephone:** .....305/913-8288  
**U.S. Toll-Free Reservations:**.....866/888-6780  
**Fax:**.....305/913-8300  
**Web:**.....www.mandarinoriental.com

#### Guest Room Information

Number of rooms: .....327  
Number of suites:.....31  
Number of floors: .....20  
Check-in time: .....3 p.m.  
Check-out time:.....12 noon

#### Meeting/Banquet Facilities

Features 15,000 square feet of flexible meeting facilities—a grand ballroom for 600, boardroom, 15 breakout rooms with many offerings, waterviews, waterfront and beach locations for private event functions, business center and an oversized terrace on the bay. Can accommodate the full range of group needs: conference, incentive, corporate retreat or reunion.

Number of meeting rooms: .....15  
Total square footage: .....15,000

**Meeting Equipment:** Audio/visual equipment, chairs, tables, lecterns, draping, flip charts, portable stage, teleconferencing, electronic reader boards, high-speed Internet access.

**Meeting Support Services:** Spotlight technicians, electricians, business center, in-house audio/visual service, concierge.

#### Dining and Entertainment

**Azul**—Spectacular cuisine matched with seamless service and an effervescent atmosphere have made Azul Miami's first ever AAA Five Diamond restaurant. The 120-seat waterfront restaurant offers an array of eclectic dishes, as well as boasting a comprehensive wine list teeming with artisan bottles and esteemed vintages, and full bar.

**Café Sambal**—Strong on flair and flavor, Café Sambal takes the concept of all-day dining well beyond that of the typical hotel bistro. The 160-seat restaurant features an Asian-inspired menu created by chef extraordinaire Paul Miller. Boasting cuisine and design that embody the spicy, modern spirit of Miami, Café Sambal provides unparalleled cuisine, atmosphere and service.

**M-Bar and Lobby Lounge**—Whether you are sipping cocktails in the elegant M-Bar or listening to the smooth jazz of harpist Roberto Perera in the Lobby Lounge, Mandarin Oriental, Miami offers a perfect environment. Offering both indoor and outdoor seating, M-Bar shakes things up with a lavish menu of 250 martinis divided into categories, such as sweet, tangy, naughty but nice and odd-balls. And on the north end of the lobby is the Lobby Lounge, offering a casual, relaxed atmosphere with plush silk sofas and oversized chairs, a full bar and light hors d'oeuvres.

#### Guest Room Amenities

High-speed Internet access, TV with remote control, cable movie channels, voice mail, telephone with message light, computer hookup, full bath amenities, turndown service, iron/ironing board, hair dryer, plush bathrobes.

#### Guest Services

Business center, concierge, gift shop, laundry service, dry cleaning, 24-hour room service, valet parking, valet service, multilingual staff, in-room safe, ice machines, bell service, complimentary newspaper.

#### Recreational Facilities

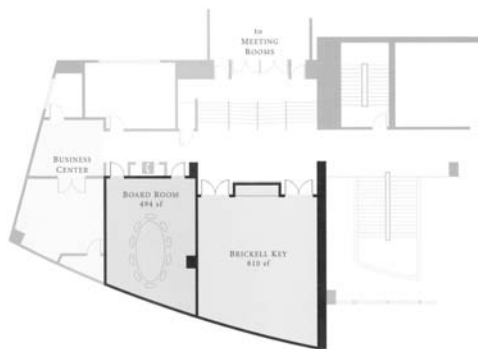
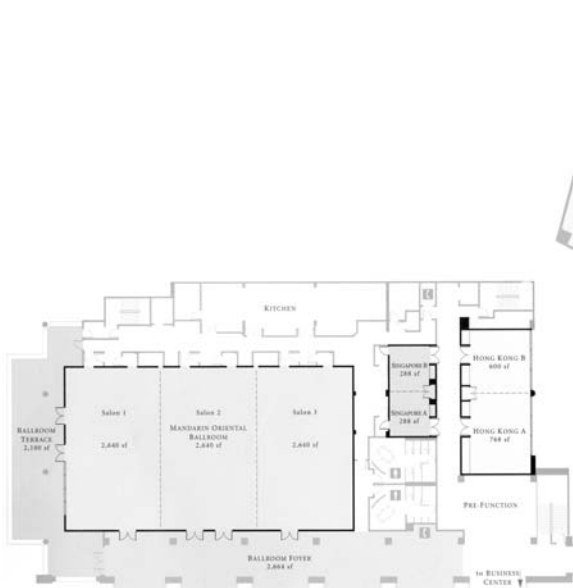
A deluxe three-level spa provides the ultimate escape with a spectacular waterfront setting. The holistic spa features 17 treatment rooms including six private spa suites with views of Biscayne Bay, Chi Studio with yoga, pilates and Tai Chi classes daily, state-of-the-art fitness center, manicure/pedicure room and relaxation area with sauna and steam room. There is also a beach club, infinity-edge swimming pool with whirlpool and outdoor jogging path.

#### General Information

**Credit Cards Accepted:** American Express, Diners Club, Discover, MasterCard, Visa

**Reservations:** 24-hour cancellation policy.

**Parking:** Valet parking



ROOM	DIMENSIONS (ft)	HEIGHT (ft)	BANQUET	RECEPTION	CLASSROOM	THEATER	U-SHAPE
MANDARIN ORIENTAL BALLROOM	120' x 66'	18'	650	835	540	880	n/a
BALLROOM SALONS 1, 2, OR 3	40' x 66'	18'	210	275	165	290	70
TERRACE	100' x 21'	n/a	170	220	n/a	n/a	n/a
SINGAPORE ROOM	16' x 36'	9'6"	40	60	36	65	27
SINGAPORE A OR B	16' x 18'	9'6"	20	30	18	30	13
HONG KONG ROOM	24' x 57'	9'6"	100	145	90	160	48
HONG KONG A	24' x 32'	9'6"	60	80	45	85	24
HONG KONG B	24' x 25'	9'6"	40	65	36	70	18
KAHALA	16' x 36'	9'6"	40	60	36	65	27
KAHALA A OR B	16' x 18'	9'6"	20	30	18	30	13
HIMALAYAN	16' x 36'	9'6"	40	60	36	65	27
HIMALAYAN A OR B	16' x 18'	9'6"	20	30	18	30	13
BANGKOK	24' x 58'	9'6"	100	145	90	150	48
BANGKOK A	24' x 32'	9'6"	60	80	45	85	24
BANGKOK B	24' x 26'	9'6"	40	65	36	70	18
BRICKELL KEY	27' x 30'	9'6"	50	85	45	90	21